



**WATERSNAKE®**

DEALER PRODUCT  
CATALOGUE  
2023 / 2024



# PERFORMANCE ENHANCED FISHING



Cover photo courtesy of Patrick Linehan - Castaway Estuary Fishing Charters  
Inside cover photo courtesy of Paul Worsteling - IFISH TV



<b>MOTOR SIZE SELECTION GUIDE</b> .....	<b>5</b>
<b>BOW MOUNT MOTORS</b>	
Geo-Spot 65lb .....	6
Geo-Spot 80lb .....	8
Stealth .....	10
Fierce 2 .....	12
<b>TRANSOM MOUNT MOTORS</b>	
Advance Brushless .....	14
Venom SXW .....	15
Asp with Transom Mount .....	16
Asp with Kayak Bracket .....	17
<b>MOTOR ACCESSORIES</b>	
Bow Mount Foot Controller .....	18
Geo-Spot Nav Sensor .....	19
Propellers .....	20
Accessories .....	20
<b>LIFEJACKETS</b>	
Inflatable Lifejackets .....	21
Inflatable Lifejacket Cylinder .....	22
Apollo Inherent Lifejackets .....	22
Nomad Inherent Lifejackets .....	23
Prowler Kayak Vests .....	24
Flex Inherent Lifejackets .....	24
Water Woofer DFDs .....	25
<b>MARINE ACCESSORIES</b> .....	<b>26</b>

## **CUSTOMER SERVICE & SPARE PARTS**

As an Australian company based in Melbourne, Watersnake has one of the best trolling motor support departments in Australia. With technical knowledge of Watersnake motors and a wide array of spare parts on hand, they can offer support and advise and get you back on the water asap.

The Watersnake website is also a wealth of information, including instructional videos on how to maintain and replace parts on your Watersnake motor.

### **WATERSNAKE SUPPORT:**

03 8789 7949

watersnake@watersnake.com.au

Scan the code to visit the Motor Support web page:  
[watersnake.com.au/pages/electric-motor-servicing](https://watersnake.com.au/pages/electric-motor-servicing)





## WHAT'S NEW

### **GEO-SPOT 80LB BOW MOUNT MOTOR**

PAGE 8



### **STEALTH BOW MOUNT MOTORS**

PAGE 10



### **FIERCE 2 BOW MOUNT MOTORS**

PAGE 12

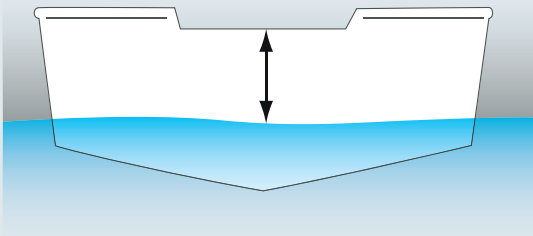


## MOTOR SIZE SELECTION GUIDES

### 1. MOTOR SHAFT LENGTH GUIDE

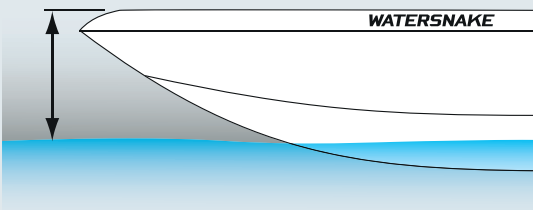
With your boat in water, measure the distance from the mounting surface of the transom or bow to the water level. The guide shown below will assist you to find the shaft length that best suits your boat.

#### TRANSOM MOUNT MEASUREMENT



Transom Mount to Water Level	Suggested Shaft Length
Up to 10" (25cm)	30" (76cm)
10" to 14" (25cm to 35cm)	36" (91cm)
14" to 20" (35cm to 50cm)	42" (106cm)
20" to 22" (50cm to 55cm)	48" (121cm)
22" to 24" (55cm to 60cm)	54" (137cm)

#### BOW MOUNT MEASUREMENT



Bow Mount to Water Level	Suggested Shaft Length
14" to 20" (35cm to 50cm)	42" (106cm)
20" to 26" (50cm to 66cm)	48" (121cm)
26" to 32" (66cm to 81cm)	54" (137cm)
32" to 36" (81cm to 91cm)	60" (152cm)
36" to 42" (91cm to 106cm)	66" (167cm)

### 2. MOTOR THRUST GUIDE

Find your boat weight and type on this table to see which Watersnake motor size is suggested for standard conditions and use. This is a general guide only. Speak with your dealer regarding the size of motor that is most appropriate for your boat.

Loaded Boat Weight	Boat Type	Recommended Thrust
Up to 150kg	Kayak	18lb
Up to 200kg	Kayak	24lb
Up to 300kg	Kayak / Dingy	34lb
300kg to 500kg	Kayak / Dingy / Tinny	44lb
400kg to 650kg	All vessel types	54lb
Up to 800kg	All vessel types	65lb - 70lb
800kg to 1200kg	All vessel types	80lb

**WATERSNAKE®**

# GEO-SPOT GPS 65LB 12V BOW MOUNT MOTORS

## GPS TECHNOLOGY

Anchor Mode, Pilot Mode, Cruise Mode and Navigation Mode.

## POWER-EFFICIENT MOTOR UNIT

Motor unit built with strong rare-earth magnets for highly efficient power: 65lb thrust on just 516W power consumption.

## READY FOR SALTWATER

Tough composite shaft, sacrificial zinc anode, encapsulated driver module.

## WIRELESS HANDHELD REMOTE

Stay in control, anywhere on your boat.

## LiFePO4 BATTERY COMPATIBLE

Use a lightweight 12V LiFePO4 lithium battery up to 14.5V in use.

- ANDERSON PLUGS FOR EASY CONNECTIONS
- BUILT-IN VOLTAGE PROTECTION UP TO 14.5V
- STAINLESS STEEL PROPELLER SHAFT
- THREE-BLADE, STRONG REINFORCED NYLON WEEDLESS PROPELLER
- COMPATIBLE WITH THE OPTIONAL GEN 3 FOOT CONTROLLER
- COMPATIBLE WITH THE OPTIONAL NAV SENSOR FOR THE ULTIMATE GPS PERFORMANCE



The Watersnake Geo-Spot GPS Bow Mount Electric Motor packs all the features of a GPS electric motor into an energy-smart design. The Anchor, Pilot, Cruise and Navigation Modes, deliver maximum boat

control while only requiring a single 12 volt deep cycle or LiFePO4 battery for power. The result is a powerful and power-efficient motor with GPS functionality and a simple battery setup.

## GPS FEATURES



**ANCHOR MODE**

**ANCHOR POSITION**

**HOLD YOUR POSITION WITH A TOUCH OF A BUTTON**

Anchor Mode is every anglers favourite. Hold your position with the press of a button and let the motor do the work while you do the catching.


For ultimate Anchor Mode performance, add the optional Watersnake Nav Sensor. See Page 19.



**PILOT MODE**

**MAINTAIN YOUR HEADING DESPITE WIND OR CURRENT**

Pilot Mode maintains your heading regardless of changes in wind or current.



**CRUISE MODE**

**MAINTAIN YOUR SPEED DESPITE WIND OR CURRENT**

Cruise Mode maintains your ground speed regardless of changes in wind or current.

Cruise Mode can also be used while using Pilot Mode or Navigation Mode.



**NAVIGATION MODE**

**RECORD AND RETRACE A TRACK UP TO 5KM LONG**

When targeting certain areas regularly, like a winding shoreline, Navigation Mode is for you. After recording a track (up to 5km long) you can autonomously retrace that track whenever you want, so you can focus on the fishing, not the motor. Geo-Spot stores up to 16 tracks at a time.

VOLTAGE	12V
MOUNTING TYPE	Bow mount XB bracket
STEERING CONTROL	Wireless handheld remote & GPS
SPEEDS	Efficient digital variable
SHAFT MATERIAL	Composite
SHAFT DIAMETER	1.2 inches (30mm) ø
SHAFT WALL THICKNESS	4.25mm
PROPELLER SHAFT	Stainless steel

PROPELLER	Three-blade weedless design, Reinforced nylon, 94mm pitch
COLOUR	White
VOLTAGE PROTECTION	Built-in protection up to 14.5V. No circuit breaker or fuse needed.
REQUIRED BATTERY	12V deep cycle or LiFePO4 Lithium up to 14.5V in use.
GPS CAPABILITY	Yes
FOOT CONTROL COMPATIBILITY	Yes

## GEO-SPOT 65LB - MODEL COMPARISON

CODE	BARCODE	MODEL	MAX. THRUST	SHAFT LENGTH	AMP DRAW	MAX. MOTOR POWER OUT	MAX RPM (NO LOAD)	MOTOR WEIGHT	3-BLADE PROPELLER	SUGGESTED BATTERY CAPACITY
55313	9312327870442	Geo-Spot SW65/54	65lb	54"	0-43A	350W	1650rpm	15kg	94mm pitch	100 Ah or larger
55316	9312327871449	Geo-Spot SW65/60	65lb	60"	0-43A	350W	1650rpm	15kg	94mm pitch	100 Ah or larger
55314	9312327872415	Geo-Spot SW65/66	65lb	66"	0-43A	350W	1650rpm	15kg	94mm pitch	100 Ah or larger

**NEW RELEASE**

**WATERSNAKE®**

# GEO-SPOT GPS 80LB

**24V BOW MOUNT MOTOR**

## GPS MOTOR WITH 80LB THRUST

Extra power for larger trailer boats.  
Suggested loaded boat weight: 800kg - 1200kg.

## NAV SENSOR INCLUDED

Jog Function in Anchor Mode, reduced boat stern movement.

## READY FOR SALTWATER

Stainless steel shaft, sacrificial zinc anode,  
encapsulated driver module.

## WIRELESS HANDHELD REMOTE

Stay in control, anywhere on your boat.

## LiFePO4 BATTERY COMPATIBLE

2 x lightweight 12V LiFePO4 lithium batteries up to 30V in use.

- UPGRADED MOUNTING BRACKET
- STRONGER AND FASTER TURNING BOX
- ANDERSON PLUGS FOR EASY CONNECTIONS
- BUILT-IN VOLTAGE PROTECTION UP TO 30V
- STAINLESS STEEL PROPELLER SHAFT
- THREE-BLADE, STRONG REINFORCED NYLON WEEDLESS PROPELLER
- COMPATIBLE WITH OPTIONAL GEN 3 FOOT CONTROLLER



**INCLUDES THE  
WATERSNAKE  
NAV SENSOR**





## GPS FEATURES

**ANCHOR MODE**



**ANCHOR POSITION**

**HOLD YOUR POSITION WITH A TOUCH OF A BUTTON**

Anchor Mode is every anglers favourite. Hold your position with the press of a button and let the motor do the work while you do the catching.

**JOG MODE**



**MOVE YOUR BOAT IN 1M INCREMENTS WHILE IN ANCHOR MODE WITH A SIMPLE BUTTON PRESS**

The included Nav Sensor adds the Jog Function. You can move your boat one metre forward, back, left or right with one button press while staying in Anchor Mode. No need to disengage and re-engage Anchor Mode each time you move.


**PILOT MODE**



**MAINTAIN YOUR HEADING DESPITE WIND OR CURRENT**

Pilot Mode maintains your heading regardless of changes in wind or current.

**CRUISE MODE**



**MAINTAIN YOUR SPEED DESPITE WIND OR CURRENT**

Cruise Mode maintains your ground speed regardless of changes in wind or current.

Cruise Mode can also be used while using Pilot Mode or Navigation Mode.

**NAVIGATION MODE**



**RECORD AND RETRACE A TRACK UP TO 5KM LONG**

When targeting certain areas regularly, like a winding shoreline, Navigation Mode is for you. After recording a track (up to 5km long) you can autonomously retrace that track whenever you want, so you can focus on the fishing, not the motor. Geo-Spot stores up to 16 tracks at a time.

VOLTAGE	24V
MOUNTING TYPE	Bow mount bracket
STEERING CONTROL	Wireless handheld remote & GPS
SPEEDS	Efficient digital variable
SHAFT MATERIAL	Stainless steel
SHAFT DIAMETER	1.2 inches (30mm) ø
SHAFT WALL THICKNESS	2.5mm
PROPELLER SHAFT	Stainless steel

PROPELLER	Three-blade weedless design, Reinforced nylon, 94mm pitch
COLOUR	White
VOLTAGE PROTECTION	Built-in protection up to 30V. No circuit breaker or fuse needed.
REQUIRED BATTERY	2 x 12V deep cycle or LiFePO4 Lithium up to 30V in use.
GPS CAPABILITY	Yes
FOOT CONTROL COMPATIBILITY	Yes

## GEO-SPOT 80LB - MODEL SPECS

CODE	BARCODE	MODEL	MAX THRUST	SHAFT LENGTH	AMP DRAW	MAX. MOTOR POWER OUT	MAX RPM (NO LOAD)	MOTOR WEIGHT	3-BLADE PROPELLER	SUGGESTED BATTERY CAPACITY
55317	9312327844672	Geo-Spot 80/66	80lb	66"	0-40A	620W	1900rpm	20kg	94mm pitch	100 Ah or larger

**NEW RELEASE**

**WATERSNAKE®**  
**STEALTH**  
**12V BOW MOUNT MOTORS**

**UP TO 65LB THRUST ON 12V**

Plenty of power and only needs a single 12 volt battery.

**READY FOR SALTWATER**

Tough composite shaft, sacrificial zinc anode, encapsulated driver module.

**WIRELESS HANDHELD REMOTE**

Stay in control, anywhere on your boat.

**LiFePO4 BATTERY COMPATIBLE**

Use a lightweight 12V LiFePO4 lithium battery up to 14.5V in use.

- UPGRADED MOUNTING BRACKET
- STRONGER AND FASTER TURNING BOX
- ANDERSON PLUGS FOR EASY CONNECTIONS
- BUILT-IN VOLTAGE PROTECTION UP TO 14.5V
- STAINLESS STEEL PROPELLER SHAFT
- THREE-BLADE WEEDLESS PROPELLER
- COMPATIBLE WITH OPTIONAL GEN 3 FOOT CONTROLLER



The Watersnake Stealth Bow Mount Electric Motor packs all of the essential features of a electric motor into an energy-smart design that requires only one 12 volt battery for power.

Equipped with either 54lbs or 65lbs of thrust, the Stealth packs plenty of power for most trailer boats. Under typical usage conditions and with a suitable battery, the Stealth motor provides hours of on-water operation.

The Stealth motor includes a handheld remote fob which enables wireless control from anywhere on your boat. It also comes with built-in voltage protection for safety and an Anderson plug system for fast and simple battery connection.

Packed with features, simple to operate and designed for a 12 volt system, an electric bow mount motor has never been so easy and affordable.

### NEW AND IMPROVED BRACKET

Easier and smoother to deploy and stow. Including large cradle hooks to hold the motor firmly in place while stowed.



VOLTAGE	12V
MOUNTING TYPE	Bow mount bracket
STEERING CONTROL	Wireless handheld remote
SPEEDS	Efficient digital variable
SHAFT MATERIAL	Composite
SHAFT DIAMETER	1.2 inches (30mm) ø
SHAFT WALL THICKNESS	4.25mm
PROPELLER	Three-blade weedless design

PROPELLER SHAFT	Stainless steel
COLOUR	Grey
VOLTAGE PROTECTION	Built-in protection up to 14.5V. No circuit breaker or fuse needed.
REQUIRED BATTERY	12V deep cycle or LiFePO4 Lithium up to 14.5V in use.
GPS CAPABILITY	No
FOOT CONTROL COMPATIBILITY	Yes

## STEALTH - MODEL COMPARISON

CODE	BARCODE	MODEL	MAX THRUST	SHAFT LENGTH	AMP DRAW	MAX. MOTOR POWER OUT	MAX RPM (NO LOAD)	MOTOR WEIGHT	3-BLADE PROPELLER	SUGGESTED BATTERY CAPACITY
55319	9312327844696	Stealth 54 / 48	54lb	48"	0-50A	290W	1700rpm	15.6kg	94mm pitch	100 Ah or larger
55318	9312327844689	Stealth 65 / 54	65lb	54"	0-43A	350W	1650rpm	16.1kg	Reinforced nylon 94mm pitch	100 Ah or larger

Check the Motor Size Selection Guides on page 5 to find the thrust and shaft length that suits your boat.

## OPTIONAL ACCESSORIES

SOLD SEPARATELY. SEE PAGES 18 AND 20.



**WATERSNAKE NYLON QUICK RELEASE PUCK PLATE**  
55528



**WATERSNAKE NYLON QUICK RELEASE BRACKET**  
55502



**WATERSNAKE ALLOY QUICK RELEASE BRACKET**  
55016



**WATERSNAKE GEN 3 FOOT CONTROLLER**  
55532

# NEW RELEASE

## WATERSNAKE® FIERCE 2 12V BOW MOUNT MOTORS

### UP TO 65LB THRUST ON 12V

Plenty of power for most trailer boats and only needs a single 12 volt battery.

### WIRELESS HANDHELD REMOTE

The splash-proof remote keeps you in control, from anywhere on your boat.

### READY FOR SALTWATER

Tough composite shaft, sacrificial zinc anode, encapsulated driver module.

### LiFePO4 BATTERY COMPATIBLE

Use a lightweight 12V LiFePO4 lithium battery up to 14.5V in use.

- DIGITAL VOLTAGE METER
- ANDERSON PLUGS FOR EASY CONNECTIONS
- STAINLESS STEEL PROPELLER SHAFT
- THREE-BLADE WEEDLESS PROPELLER

VOLTAGE	12V
MOUNTING TYPE	Bow mount bracket
STEERING CONTROL	Wireless handheld remote
SPEEDS	Efficient digital variable
SHAFT MATERIAL	Composite
SHAFT DIAMETER	1.2 inches (30mm)
SHAFT WALL THICKNESS	4.25mm
VOLTAGE PROTECTION	Built-in protection up to 14.5V. No circuit breaker or fuse needed.
REQUIRED BATTERY	12V deep cycle or LiFePO4 Lithium up to 14.5V in use.



GPS CAPABILITY	No
FOOT CONTROL COMPATIBILITY	No



DIGITAL VOLTAGE METER

The Watersnake Fierce 2 Bow Mount Electric Motor packs all the basic features of a electric motor into a saltwater-capable design that requires only one 12 volt battery for power.

Equipped with either 54lbs or 65lbs of thrust, the Fierce 2 packs plenty of power for most trailer boats. Under typical usage conditions and with a suitable battery, the Fierce 2 motor provides hours of on-water operation.

The Fierce 2 motor includes an easy to use wireless handheld remote which enables control from

anywhere on your boat. It also comes with an Anderson plug system for fast and simple battery connection.

Packed with features, simple to operate and designed for a 12 volt system, an electric bow mount motor has never been so easy and affordable.

With the built-in digital voltage meter in the head unit you will always know the voltage output of your battery while out on the water.

## FIERCE 2 - MODEL COMPARISON

CODE	BARCODE	MODEL	MAX THRUST	SHAFT LENGTH	AMP DRAW	MAX. MOTOR POWER OUT	MAX RPM (NO LOAD)	MOTOR WEIGHT	WEEDLESS PROPELLER	SUGGESTED BATTERY CAPACITY
55276	9312327875393	Fierce 2 54 / 48	54lb	48"	0-50A	290W	1700rpm	12.2kg	94mm pitch	100 Ah or larger
55277	9312327875409	Fierce 2 65 / 54	65lb	54"	0-43A	350W	1650rpm	12.6kg	Reinforced nylon 94mm pitch	100 Ah or larger

Check the Motor Size Selection Guides on page 5 to find the thrust and shaft length that suits your boat.

## OPTIONAL ACCESSORIES

SOLD SEPARATELY. SEE PAGE 20.



WATERSNAKE NYLON QUICK RELEASE PUCK PLATE KIT  
55528



WATERSNAKE NYLON QUICK RELEASE BRACKET  
55502



WATERSNAKE ALLOY QUICK RELEASE BRACKET  
55016

**WATERSNAKE®**

# ADVANCE

## 12V BRUSHLESS TRANSOM MOTOR

### POWERFUL & EFFICIENT BRUSHLESS MOTOR

Brushless = longer run-times, longer life cycle, less maintenance

### EFFICIENT VARIABLE SPEED CONTROLLER

Much longer distances per battery charge when cruising

### READY FOR SALTWATER

Stainless steel shaft, sacrificial zinc anode.

### LiFePO4 BATTERY COMPATIBLE

Use a lightweight 12V LiFePO4 lithium battery up to 14.5V in use.

- DIGITAL VOLTAGE METER
- ANDERSON PLUGS FOR EASY CONNECTIONS
- SPORTS MODE FOR SHORT POWER BURSTS
- USB PORT FOR CHARGING PHONES
- BUILT-IN VOLTAGE PROTECTION UP TO 14.5V

The power and efficiency of brushless motor technology is nothing short of impressive. This motor boasts an incredible 70lbs of thrust - enough power to turn small boats into zippy fishing vessels and all on just a single 12 volt battery.



VOLTAGE	12V
MOTOR TYPE	Powerful and efficient brushless
MOUNTING TYPE	Tilting alloy transom mount bracket
STEERING CONTROL	Extendable tiller handle
SPEEDS	Power-efficient digital variable speed forward and reverse
SHAFT	Stainless steel, 1.2" (30mm) ø

PROPELLER	High-strength three-blade weedless
PROPELLER SHAFT	Stainless steel
COLOUR	White
VOLTAGE PROTECTION	Built-in protection up to 14.5V. No circuit breaker or fuse needed.
REQUIRED BATTERY	12V deep cycle or LiFePO4 Lithium up to 14.5V in use

### ADVANCE BRUSHLESS - MODEL SPECS

CODE	BARCODE	MODEL	MAX. THRUST	SHAFT LENGTH	AMP DRAW	MAX. RPM (NO LOAD)	MOTOR WEIGHT	SUGGESTED BATTERY CAPACITY	SUGGESTED MAX. LOADED BOAT WEIGHT
55267	9312327853056	Advance Brushless SWS 70/36	70lb	36"	0-50A	1300rpm	11.3kg	100Ah or larger	800kg

**WATERSNAKE®**

# VENOM SXW

## 12V TRANSOM MOTORS

### DIGITAL VOLTAGE METER

Keep track of your battery power.

### READY FOR SALTWATER

Tough composite shaft, sacrificial zinc anode.

### LiFePO4 BATTERY COMPATIBLE

Use a lightweight 12V LiFePO4 lithium battery up to 14.5V in use.

Watersnake Venom SXW electric motors are a range of dependable saltwater-ready transom-mount motors. The 26" short shaft models are perfect for canoes, tenders, inflatable boats and small tinnies. The 34lb/30", 44lb/36" and 54lb/42" are suited to boats ranging from small tenders and tinnies up to dedicated estuary and inshore sportfishing boats.



VOLTAGE	12V
MOUNTING TYPE	Tilting alloy transom bracket
STEERING CONTROL	Extendable tiller handle
SPEEDS	Five forward speeds, three reverse speeds
SHAFT MATERIAL	Composite
PROPELLER	Weedless design
PROPELLER SHAFT	Stainless steel
COLOUR	White
REQUIRED BATTERY	12V deep cycle or LiFePO4 Lithium up to 14.5V in use

## VENOM SXW - MODEL COMPARISON

CODE	BARCODE	MODEL	MAX. THRUST	SHAFT LENGTH	AMP DRAW	MAX. RPM (NO LOAD)	MOTOR WEIGHT	WEEDLESS PROPELLER	SUGGESTED BATTERY CAPACITY
55222	9312327835304	Venom SXW 34/26	34lb	26"	7.5-34A	1300rpm	5.8kg	2-Blade (70mm pitch)	60Ah or larger
55223	9312327835311	Venom SXW 54/26	54lb	26"	13-54A	1370rpm	8.4kg	3-Blade (94mm pitch)	100Ah or larger
55227	9312327835359	Venom SXW 34/30	34lb	30"	7.5-34A	1300rpm	6kg	2-Blade (70mm pitch)	60Ah or larger
55228	9312327835366	Venom SXW 44/36	44lb	36"	11-44A	1300rpm	8.5kg	3-Blade (94mm pitch)	80Ah or larger
55525	9312327857023	Venom SXW 54/36	54lb	36"	13-54A	1370rpm	8.5kg	3-Blade (94mm pitch)	100Ah or larger
55219	9312327847888	Venom SXW 65/42	65lb	42"	13-50A	1300rpm	10kg	3-Blade (94mm pitch)	100Ah or larger
55229	9312327835373	Venom SXW 54/42	54lb	42"	13-54A	1370rpm	8.5kg	3-Blade (94mm pitch)	100Ah or larger

# WATERSNAKE<sup>®</sup> ASP 12V TRANSOM MOTORS



LIGHTWEIGHT & PERFECT FOR KAYAKS

LiFePO4 BATTERY COMPATIBLE

RETRACTABLE TILLER HANDLE

Watersnake Asps are the smallest of all Watersnake motors. They're designed especially for kayaks and have an adjustable transom-mount fitting for easy attachment. There is a high and low speed control and a forward and reverse switch. The T18 motor features an anti-impact clip system in the mount while the T24 motor features a tilting mount. The two-blade propeller is a weedless design. It's a lightweight motor offering the ultimate in portability and can be used in both saltwater and freshwater.



T-18 MOTOR

T-24 MOTOR

VOLTAGE	12V
MOUNTING TYPE	Transom mount bracket
STEERING CONTROL	Retractable tiller handle
SPEEDS	Two forward speeds, two reverse speeds
SHAFT MATERIAL	Alloy
PROPELLER	2 blade weedless - 75mm pitch
PROPELLER SHAFT	Stainless steel
COLOUR	White
REQUIRED BATTERY	12V deep cycle or LiFePO4 Lithium up to 14.5V in use

## ASP WITH TRANSOM - MODEL COMPARISON

CODE	BARCODE	MODEL	MAX. THRUST	SHAFT LENGTH	AMP DRAW	MAX. RPM (NO LOAD)	MOTOR WEIGHT	TRANSOM MOUNT	SUGGESTED BATTERY CAPACITY
55043	9312327788563	Asp T18 Motor - Saltwater	18lb	24"	7-15A	1400rpm	2.35kg	Non-tilting	40 Ah or larger
55199	9312327816976	Asp T24 Motor - Saltwater	24lb	24"	9-20A	1700rpm	3.1kg	Tilting	40 Ah or larger



**WATERSNAKE®**

# ASP

**12V MOTORS WITH  
KAYAK BRACKET**

**LIGHTWEIGHT & PERFECT FOR KAYAKS**

**REVOLUTIONARY PATENTED BRACKET**

**LiFePO4 BATTERY COMPATIBLE**

The Watersnake Kayak Bracket is a revolutionary kayak bracket changing the way kayakers think about putting an electric motor on a kayak.

The patented design was created to make it easy to attach Watersnake Electric Motors to kayaks properly, even if the mounting surface is not horizontal. The bracket is the first of its kind and is suitable for most kayaks. Note: access inside the hull is needed.

The bracket provides a wide variety of angles to optimise the Asp motor's position and angle on your kayak.

VOLTAGE	12V
MOUNTING TYPE	Universal kayak bracket
STEERING CONTROL	Tiller handle
SPEEDS	Two forward speeds, two reverse speeds
SHAFT MATERIAL	Alloy
PROPELLER	2 blade weedless - 75mm pitch
PROPELLER SHAFT	Stainless steel
COLOUR	White
REQUIRED BATTERY	12V deep cycle or LiFePO4 Lithium up to 14.5V in use



**T-24 MOTOR WITH  
KAYAK BRACKET**

## ASP WITH KAYAK BRACKET - MODEL COMPARISON

CODE	BARCODE	MODEL	MAX. THRUST	SHAFT LENGTH	AMP DRAW	MAX. RPM (NO LOAD)	MOTOR WEIGHT	SUGGESTED BATTERY CAPACITY
55526	9312327857030	Asp T18 Motor - with bracket	18lb	24"	7-15A	1400rpm	2.8kg	40 Ah or larger
55527	9312327857047	Asp T24 Motor - with bracket	24lb	24"	9-20A	1700rpm	3.8kg	40 Ah or larger

# WATERSNAKE® GEN 3 FOOT CONTROLLER

COMPATIBLE WITH  
GEO SPOT & STEALTH MOTORS

FIVE METRE CABLE

The Watersnake Gen 3 Foot Control unit is an optional accessory for the Watersnake Geo-Spot and Watersnake Stealth bow mount motors

It provides hands-free control when you're not using the motor's GPS functions. This foot control has large user-friendly buttons to steer left and right, turn the constant power switch on and off, or to provide momentary bursts of speed. The speed dial is also located in an accessible position and is easy to adjust.

The Watersnake Gen 3 Foot Control unit provides superb control and manoeuvrability and the design features a screw-cap plug on the cable for better connection to the motor. The foot control unit allows you to make positional adjustments without interrupting your casting and fishing. They are a popular choice among lure anglers who fish structure and require hands-free focus for casting accuracy. The foot pedal system delivers instant response for sharp turns and frequent adjustments.



CODE	BARCODE	MODEL	INNER	OUTER
55532	9312327870459	Watersnake Gen 3 Foot Controller	1	10

# WATERSNAKE<sup>®</sup> NAV SENSOR

**AVAILABLE FOR  
GEO-SPOT 65lb MOTORS**

Already included with the  
Geo-Spot 80lb motor.

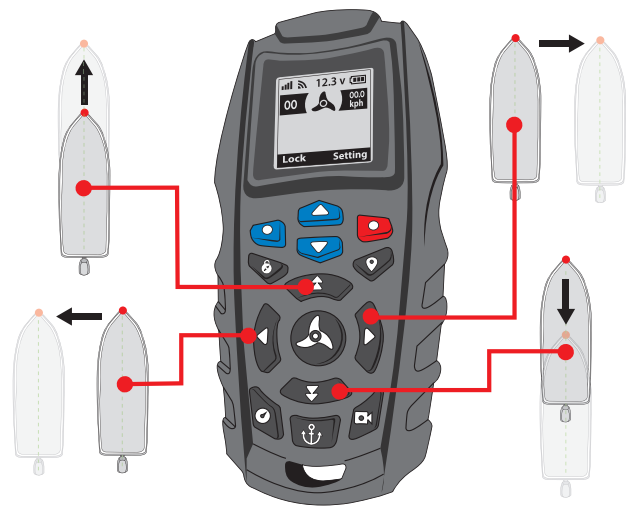
The Watersnake GPS Nav Sensor helps you get the most out of your Geo-Spot electric trolling motor. It improves Navigation, Tracking and Anchor Mode performance and also adds a Jog Function to the Anchor Mode. It's easy to install and connect to your Watersnake Geo-Spot motor.

## FEATURES

- IMPROVES NAVIGATION
- IMPROVES TRACKING
- IMPROVES ANCHOR MODE ACCURACY
- ADDS JOG FUNCTION TO THE ANCHOR MODE
- LIMITS BOAT STERN MOVEMENT
- 5 METRE CABLE

## JOG FUNCTION

When in Anchor Mode this feature moves the boat in one metre increments in four directions. When the trolling motor is in Anchor Mode, the user can press the acceleration (forwards), deceleration (backwards), turn left (left), and turn right (right) buttons on the remote control to operate and direct the jog function. The four jog directions act as coordinates relative to the current boat direction. With each press, the trolling motor moves in 1 metre increments. The user can press the same direction button up to 10 times.

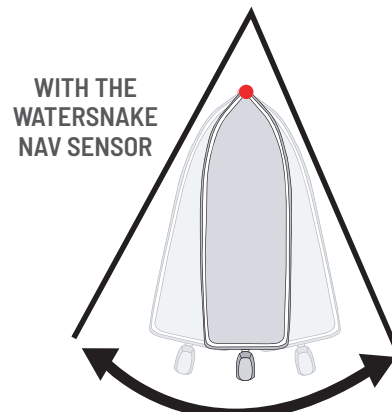
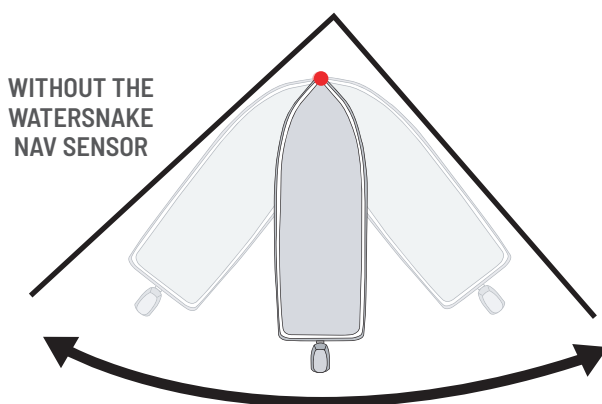


**CONTROLLING THE JOG FUNCTION**

## REDUCES BOAT STERN MOVEMENT

Limits the amount of boat stern movement caused by wind and current.

CODE	BARCODE	MODEL	INNER	OUTER
55533	9312327871807	Watersnake Nav Sensor	1	30



## INSTALLATION:

Connect to the foot control plug on the Watersnake Geo-Spot motor and secure to the boat with the supplied hardware at least one metre from the trolling motor. (Refer to detailed installation instruction manual in the box.)

# PROPELLERS

CODE	BARCODE	MODEL	INNER	OUTER
55500	9312327794939	Watersnake 2-Blade Mini Propeller 18-24lb (75.5mm Pitch)	10	20
55131	9312327788716	Watersnake 2-Blade Propeller 28-34lb (70mm Pitch)	1	12
55130	9312327788709	Watersnake 3-Blade Propeller 44lb,54lb and 65lb (94mm Pitch)	1	12
55535	9312327857016	Watersnake 3-Blade Propeller 65lb and 85lb (94mm Pitch) Reinforced Nylon	1	12
55132	9312327788723	Watersnake Prop Nut, Pin & Key Kit	12	48



55500



55131



55130



55535



55132

Made with tough reinforced nylon.

# MOTOR ACCESSORIES

CODE	BARCODE	MODEL	INNER	OUTER
55519	9312327799446	Watersnake Kayak Motor Bracket	1	10
55534	9312327875362	Watersnake Geo-Spot Remote Control	1	1
55507	9312327792478	Watersnake Telescopic Motor Handle	1	20
55516	9312327846614	Watersnake Trolling Motor Circuit Breaker	10	20
55502	9312327795424	Watersnake Nylon Quick-Release Bracket ( White )	1	5
55016	9312327784190	Watersnake Alloy Quick-Release Bracket ( Black )	1	5
55528	9312327804393	Watersnake Nylon Quick-Release Puck Plate Kit	1	20



55516  
CIRCUIT BREAKER



55507 WATERSNAKE  
TELESCOPIC  
EXTENDABLE MOTOR  
HANDLE

Please note: Not compatible with Asp motors.



55519  
KAYAK MOTOR BRACKET



55528 NYLON QUICK RELEASE  
PUCK PLATE KIT

Easily mount your motor with a Watersnake Nylon Quick-Release Bracket to second location e.g. your garage wall for storage or to a second boat.



55502 NYLON QUICK-RELEASE BRACKET  
Attach and remove your motor from your boat quickly and easily.



55534  
GEO-SPOT  
REMOTE CONTROL

Note: Only one remote can be used with a motor at any given time.



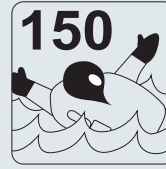
55016 ALLOY QUICK-RELEASE BRACKET  
Attach and remove your motor from your boat quickly and easily.

## NEW DESIGN

Thinner & more comfortable.

# MANUAL INFLATABLE LIFEJACKETS

Level 150 - AS4758.1:2015



Offshore,  
foul weather clothing.



CODE	BARCODE	MODEL	INNERS	OUTERS
56207	9312327875041	Inflatable Level 150 Black - Manual (Chest Sz 80-140cm)	1	10
56208	9312327875058	Inflatable Level 150 Blue - Manual (Chest Sz 80-140cm)	1	10
56209	9312327875065	Inflatable Level 150 Red - Manual (Chest Sz 80-140cm)	1	10
56210	9312327875072	Inflatable Level 150 Green - Manual (Chest Sz 80-140cm)	1	10
56211	9312327875089	Inflatable Level 150 Lilac - Manual (Chest Sz 80-140cm)	1	10
56206	9312327875034	Inflatable Level 150 Camo - Manual (Chest Sz 80-140cm)	1	10



56207

56208

56209

56210

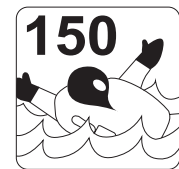
56211

56206

## NEW DESIGN

# MANUAL INFLATABLE LIFEJACKETS WITH WINDOW

Level 150 -  
AS4758.1:2015



Offshore,  
foul weather clothing.



56236

56237

56238

56239

CODE	BARCODE	MODEL	INNERS	OUTERS
56236	9312327876666	Inflatable Level 150 Camo- Manual With Window ( Chest Sz 80-140cm )	1	10
56237	9312327876673	Inflatable Level 150 Black- Manual With Window ( Chest Sz 80-140cm )	1	10
56238	9312327876680	Inflatable Level 150 Blue- Manual With Window ( Chest Sz 80-140cm )	1	10
56239	9312327876697	Inflatable Level 150 Red- Manual With Window ( Chest Sz 80-140cm )	1	10

**NOTICE:** Marine authorities recommend that all inflatable PFDs are serviced annually. Please consult your state or territory's regulations to ensure your servicing schedule is compliant with the relevant requirements.

**WATERSNAKE®**

# INFLATABLE LIFEJACKET ACCESSORIES

CODE	BARCODE	MODEL	INNERS	OUTERS
56059	9312327841251	Watersnake Adult Inflatable Cylinder 33g with Clips	1	50

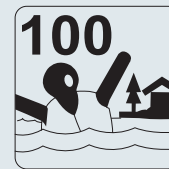
**NOTICE:** Marine authorities recommend that all inflatable PFDs are serviced annually. Please consult your state or territory's regulations to ensure your servicing schedule is compliant with the relevant requirements.



**WATERSNAKE®**

# APOLLO INHERENT LIFEJACKETS

**Level 100**  
AS4758.1:2015



Sheltered waters,  
light clothing



XX-SMALL CHILDRENS



CHILDRENS



ADULT

**ENSURE YOU CHOOSE THE RIGHT LIFEJACKET FOR THE RIGHT APPLICATION.**

CODE	BARCODE	MODEL	INNERS	OUTERS
56180	9312327874822	Apollo Level 100 Child XX-Small 10kg ( Chest Sz 45-60cm )	1	25
56181	9312327874839	Apollo Level 100 Child X-Small 10-15kg ( Chest Sz 55-70cm )	1	30
56182	9312327874846	Apollo Level 100 Child Small 15-25kg ( Chest Sz 70-80cm )	1	25
56183	9312327874853	Apollo Level 100 Child Med 25-40kg ( Chest Sz 75-85cm )	1	20
56184	9312327874860	Apollo Level 100 Adult Small 40-50kg ( Chest Sz 75-90cm )	1	10
56185	9312327874877	Apollo Level 100 Adult Medium 50-60kg ( Chest Sz 90-105cm )	1	10
56186	9312327874884	Apollo Level 100 Adult Large 60-70kg ( Chest Sz 105-120cm )	1	10
56187	9312327874891	Apollo Level 100 Adult X-Large >70kg ( Chest Sz 120-135cm )	1	10
56188	9312327874907	Apollo Level 100 Adult XX-Large >70kg ( Chest Sz 135-150cm )	1	10

**WATERSNAKE®**  
**NOMAD INHERENT**  
**LIFEJACKETS**

**Level 50**  
**AS4758.1:2015**



Swimmers only,  
sheltered waters,  
help at hand,  
limited protection  
against drowning.



ADULT

CHILD

ADULT

CHILD

**ENSURE YOU CHOOSE THE RIGHT LIFEJACKET FOR THE RIGHT APPLICATION.**

CODE	BARCODE	MODEL	INNERS	OUTERS
56198	9312327874976	Nomad Yellow Level 50 Childs Small 15-25kg ( Chest Sz 70-80cm )	1	34
56199	9312327874983	Nomad Yellow Level 50 Childs Medium 25-40kg ( Chest Sz 75-85cm )	1	24
56200	9312327874990	Nomad Yellow Level 50 Adults Small 40-50kg ( Chest Sz 75-90cm )	1	20
56201	9312327875003	Nomad Yellow Level 50 Adults Medium 50-60kg ( Chest Sz 90-105cm )	1	10
56202	9312327875010	Nomad Yellow Level 50 Adults Large 60-70kg ( Chest Sz 105-120cm )	1	10
56203	9312327875027	Nomad Yellow Level 50 Adults X Large >70kg ( Chest Sz 120-135cm )	1	10
56190	9312327874914	Nomad Red Level 50 Childs Small 15-25kg ( Chest Sz 70-80cm )	1	25
56191	9312327874921	Nomad Red Level 50 Childs Medium 25-40kg ( Chest Sz 75-85cm )	1	25
56192	9312327874938	Nomad Red Level 50 Adults Small 40-50kg ( Chest Sz 75-90cm )	1	20
56193	9312327874945	Nomad Red Level 50 Adults Medium 50-60kg ( Chest Sz 90-105cm )	1	10
56194	9312327874952	Nomad Red Level 50 Adults Large 60-70kg ( Chest Sz 105-120cm )	1	10
56195	9312327874969	Nomad Red Level 50 Adults X Large >70kg ( Chest Sz 120-135cm )	1	10

**WATERSNAKE®**  
**PROWLER KAYAK VESTS**

**Level 50S**

AS4758.1:2015



Special purpose device. Swimmers only, sheltered waters, help at hand, limited protection against drowning.

ENSURE YOU CHOOSE THE RIGHT LIFEJACKET FOR THE RIGHT APPLICATION.



CODE	BARCODE	MODEL	INNERS	OUTERS
56077	9312327867435	Prowler Level 50S Camo Adult - Small 40-50kg (Chest Sz 75-90cm)	1	20
56078	9312327867442	Prowler Level 50S Camo Adult - Medium 50-60kg (Chest Sz 90-105cm)	1	20
56079	9312327867459	Prowler Level 50S Camo Adult - Large 60-70kg (Chest Sz 105-120cm)	1	15
56080	9312327867466	Prowler Level 50S Camo Adult - X-Large >70kg (Chest Sz 120-135cm)	1	15

**WATERSNAKE®**  
**FLEX INHERENT LIFEJACKETS**

**Level 150**

AS4758.1:2015



Offshore, foul weather clothing.

ENSURE YOU CHOOSE THE RIGHT LIFEJACKET FOR THE RIGHT APPLICATION.



**SIZED TO FIT OVER WET WEATHER GEAR**

CODE	BARCODE	MODEL	INNERS	OUTERS
56136	9312327856781	Flex Level 150 Red Adult Medium 50-60kg ( Chest Sz 90-105cm )	1	9
56137	9312327856798	Flex Level 150 Red Adult Large 60-70kg ( Chest Sz 105-120cm )	1	8
56138	9312327856804	Flex Level 150 Red Adult X-Large >70kg ( Chest Sz 120-135cm )	1	9



# WATER WOOFER DFDs



CODE	BARCODE	MODEL	INNERS	OUTERS
57001	9312327859461	Water Woofers DFD - Chest Size 35-48cm Lilac XS	1	100
57002	9312327859478	Water Woofers DFD - Chest Size 43-63cm Lilac S	1	100
57003	9312327859485	Water Woofers DFD - Chest Size 43-76cm Lilac M	1	30
57004	9312327859492	Water Woofers DFD - Chest Size 58-89cm Lilac L	1	25
57005	9312327859508	Water Woofers DFD - Chest Size 76-114cm Lilac XL	1	15
57006	9312327859515	Water Woofers DFD - Chest Size 35-48cm Blue XS	1	100
57007	9312327859522	Water Woofers DFD - Chest Size 43-63cm Blue S	1	100
57008	9312327859539	Water Woofers DFD - Chest Size 43-76cm Blue M	1	30
57009	9312327859546	Water Woofers DFD - Chest Size 58-89cm Blue L	1	25
57010	9312327859553	Water Woofers DFD - Chest Size 76-114cm Blue XL	1	15

# MARINE ACCESSORIES



55541



59089



59090



59091



253007



253011



JM52038

CODE	BARCODE	MODEL	INNERS	OUTERS
55541	9312327701708	Watersnake White Fold Up Drink Holder	1	24
59089	9312327704846	Screw Kit SS Machine Screw Kit 81 Pieces	6	48
59090	9312327704853	Screw Kit SS Pan Flat Head Kit 68 Pieces	6	48
59091	9312327704860	Screw Kit SS Oval Head Self Tapping Kit 68 Pieces	6	48
253007	9331026011147	Paddle Platinum Telescopic Paddle	1	12
253011	9312327858402	Bucket Jarvis Walker Fold Away Bucket 9 Litre	1	24
JM52038	9312327779905	Jarvis Marine Knife and Plier Holder - Medium	1	12



# AUSTRALIAN WHOLESALE CONTACT DETAILS:

## NSW, ACT & NT

### FRONTIER AGENCIES

**Travis Soulsby**

Email: [travis@frontieragencies.com.au](mailto:travis@frontieragencies.com.au)

Phone: 0402 834 126

## QUEENSLAND, VICTORIA

### FRONTIER AGENCIES

**Damian Grieve**

Email: [damian@frontieragencies.com.au](mailto:damian@frontieragencies.com.au)

Phone: 0488 448 860

## WESTERN AUSTRALIA

### BENBOW - AUSTWIDE CONSUMER PRODUCTS

**Travis Chivers** Phone: 0417 188 920 Email: [travis@benbow.com.au](mailto:travis@benbow.com.au)

**James Jonasson** Phone: 0419 940 651 Email: [jjonasson@austwide.com.au](mailto:jjonasson@austwide.com.au)

6-22 Magnet Road Canningvale, WA, 6155

PH: 08 6218 5350 Fax: 08 6218 5360

## SOUTH AUSTRALIA & TASMANIA

### WATERSNAKE HEAD OFFICE

**Kallan Braid-Ball**

Email: [watersnake@watersnake.com.au](mailto:watersnake@watersnake.com.au) Phone: 03 8789 7949

297-305 South Gippsland Highway, Dandenong South, VIC 3175



**WATERSNAKE DISTRIBUTION Pty Ltd**

Phone: (03) 8789 7949

[watersnake@watersnake.com.au](mailto:watersnake@watersnake.com.au)

297-305 South Gippsland Highway  
Dandenong South, Victoria 3175

[watersnake.com.au](http://watersnake.com.au)

Australian wholesale contact details inside back cover.

**99249** WATERSNAKE DEALER  
PRODUCT CATALOGUE 2023 / 2024



9 360395 000001 >

Product specifications are subject to change without notice.

© Copyright 2023 Watersnake Distribution Pty Ltd