



Thank you for your interest in our products. This catalogue will provide you with a selection of our comprehensive accessory programme.

The catalogue consists in two parts:

In **Part 1**, you will find various equipment components for your genset that can be ordered in addition to the standard equipment set. Please note that equipment components,

unless stated otherwise, must be included in your order when purchasing the genset. The subsequent refitting is possible only if Fischer Panda has the pertinent upgrade kits available in their programme.

Part 2 contains our accessory programme. Fischer Panda offers complete kits for installation and service tasks. All parts may also be ordered separately. All parts from the accessory programme can also be installed subsequently, i.e., after purchasing a genset.



Our worldwide distributors and partners are able to help you to choose the best generator for your requirements.

Company Headquarters in Paderborn, Germany



Contents

1. Gensets Equipment Components

1.1 Sound Insulation / Coatings	6
The super low-noise sound insulation capsule	6
Capsule designs.....	7
Generator Color.....	8
1.2 Expanded Generator Function	10
24 Volt Starter System	11
Hydraulic Coupling.....	11
Display Kit	12
Keel Cooling	12
Hot Water Connection	13
Re-start Protection	13
2-pole Installation.....	14
Sliding Rails	14
Water Heating.....	14
Air tilter for sandy environment	14
1.3 Remote Control Panel	15
Remote Control Panel iControl.....	16
Options for Remote Control Panel iControl.....	17
Remote Control Panel xControl	18
Options for Remote Control Panel xControl	19
Remote Control Panel Panda P4 Control	20
Remote Control Panel Panda P6 Plus.....	21
Options for Remote Control Panel P6 Plus	22
Ad-on modules for Panel P6 Plus (automatic start)	23
Remote Control Panel AGT Control	24
1.4 Current Distribution Switching Monitoring	25
Parallel Switching Box for i-Generatoren	26
Parallel Switching Box for x-Generatoren	27
Automatic Shore-Side / Generator Power Switch	28

2. Accessory

2.1 INSTALLATION KIT	
Installations kits for Marine Gensets	30
2.2 INSTALLATION ACCESSORIES	
Cooling System for Marine Gensets	34
Exhaust System for Marine Gensets.....	38
Cooling and Exhaust System for Vehicle Gensets.....	43
Fuel System for Marine and Vehicle Gensets	47
2.4 ATTACHMENT SYSTEM	
Shock-mount, captive	51
Shock-mount, non-captive	51
Shock-mount with safety rope	51

Contents

2.5 OPTIONAL ACCESSORIES

Silencer for Marine Gensets.....	53
Hose Clamps.....	53
Jointed Bolt Clamps.....	54
Hose Connector 90 °.....	55
Hose Connector, straight	55
Hose Connector T-Pieces	56
Hose Connector T-Pieces, brass.....	56
Threaded fitting.....	57
Electrical Oil Change Pump	57

2.6 SERVICE KITS

Service Kits	58
Service Kits Standard	60
Service Kits Plus	63

Reference Tables for Service and Installation	80
---	----

Hose Diameter	86
---------------	----



Gensets Equipment Components

- Sound insulation
- Expanded generator functions
- Remote control
- Current distribution and switching



Capsule material

glass fibre reinforced
plastic (GFRP)
stainless steel (MPL)

Sound insulation materials

3D (thickness 25 mm)
4DS (thickness 40 mm)
6DS (thickness 60 mm)

Sound insulation

The super low-noise sound insulation system

For the highest standards of sound level

The most significant advantage of all Fischer Panda generators is the low sound level. The super low-noise sound insulation system are offered in different versions.

Capsule designs

The Panda marine gensets up to 25 kW and all Panda vehicle gensets up to 12 kW are fitted with a sound insulation capsule made from glass fibre reinforced plastic (GFRP) as a standard.

Starting with the 30 kW (Marine) version or the 15 kW (vehicle) version, the capsule supplied is made from stainless steel (MPL).

Sound Insulation Versions

Sound insulation capsule versions

The Fischer Panda sound insulation capsules are available for order either in the standard design or as a higher quality version. The following upgrade options are available:



GFRP
sound insulation capsule

Sound insulation materials

The thickness of the sound insulation material is approx. 25 mm (3D) for the marine gensets and approx. 40 mm (4DS) for the vehicle gensets. For a surcharge, the sound insulation capsules can also be supplied with a thicker sound insulation of up to 60 mm (6 DS).



MPL sound insulation capsule

Possible upgrades are:

Sound insulation capsule variations		
Standard	Upgrade options	Upgrade
GFKRP 3D	MPL 4DS	Insulation thickness 40 mm instead of 30 mm, plus stainless steel capsule instead of glass fibre reinforced plastic capsule
MPL 4DS	MPL 6DS	Insulation thickness 60 mm instead of 40 mm



Generator with the color of your
choice

Coatings

Individual Generator Color



suitable for generator

■ 8000x bis 30x



The standard finish ist not always the best choice for you, e.g. if you want a generator, which should show a uniform appearance color with your vehicle.

We paint your generator individually according to your wishes, if you prefer a different color. Please inquire about details if desired





Expanded Generator Function

24 volts starter system Automaticstart

Hydraulic Coupling

General Signal Interface

Keel Cooling

Hot Water Connection

Restart Protection

2-pole installation

Sliding Rails

Sand filter

Water Heating

Battery Monitor

Generator Equipment

Expanded Generator Function

The functions of all Fischer Panda gensets can be expanded. For this purpose, Fischer Panda offers various equipment components that can be ordered along with the genset when it is purchased.

24 Volt Starter System

With this starter system, all required components are designed for 24 V. Many special applications require a 24 V starter system instead of the standard 12 V starter system, which is then connected to a 24 V battery.

The system consists in a 24 V electric starter, glow plugs, and a 24 V alternator. The internal control system of the gensets, however, still runs on 12 V.

for generator

- Panda 5000i
- Panda AGT 4000
- Panda 8000x -18x
- Panda 8000i - 15000i
- Panda 7,5-4
- Panda 24x - 30x
- Panda 25i



24 Volt
Starter System



Hydraulic Coupling for operating a pump

The electromagnetic clutch coupling in a separate housing makes it possible to connect a hydraulic pump to various Fischer Panda gensets.

for generator

- Panda 8000x - 15000x
- Panda 8000i - 15000i
- Panda 7,5-4
- Panda 18x - 30x IC
- Panda 25i
- Panda 9-4
- Panda 12-4



Generator with Hydraulic Coupling



Sample
installation of
display kit

Display Kit

The display kit consists in an oil pressure gauge and a cooling water temperature gauge and sensors on the genset. The gauges are supplied as detail parts and can e.g. be installed in the control cabinet. The contact lines are routed out of the genset. Additional gauges are available upon request. Supplied without a control cabinet!



Oil pressure gauge
(Figure similar)



Cooling water temperature gauge
(Figure similar)

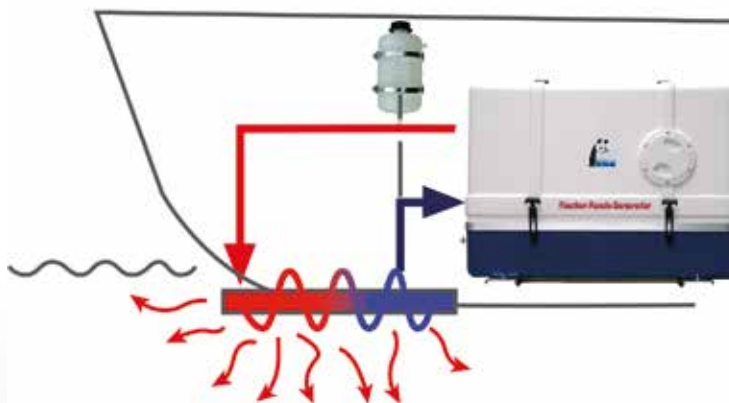
for generators

- all Fischer Panda Generators
(außer i-Serie und x-Serie)

Keel Cooling

The generators are equipped with a dual circuit cooling system by default, i.e. the temperature of the coolant in the inner cooling circuit is cooled by an internal heat exchanger with fresh water.

On request, the generator can be ordered with a keel cooling. With a keel cooling, the cooling water of the motor is cooled by a pipe system at the outside of the hull.



for generators

- all Panda types starting with 8000x

Hot Water Connection

The genset can be fitted with two extra connections for an external hot-water circuit. The hot water can be used e.g. for heating rooms. Water infeed (cold) and water outlet (hot) are fitted with a ball valve.

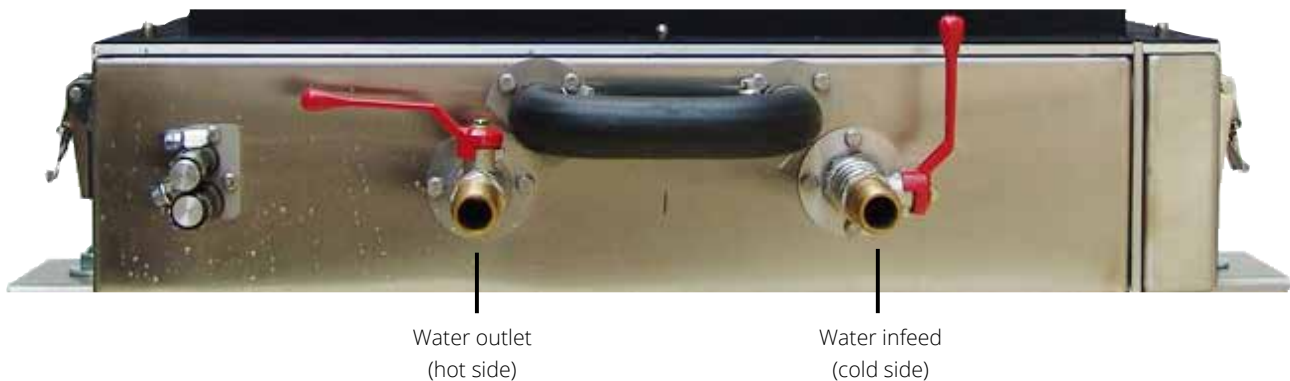
A thermostat valve is required and must be installed by the customer.

- for all AC gensets starting with Panda 8000 (3,000 RPM)
- for all AC gensets starting with Panda 6500 (3.600 UpM)
- for all AC gensets starting with Panda 7.5-4 (1,500 RPM)
- for all DC gensets starting with Panda AGT-DC 5000



Generator with hot water connection

Sample image



Sample representation - The connections can also be fitted on another side, depending on the genset model.

Re-start Protection

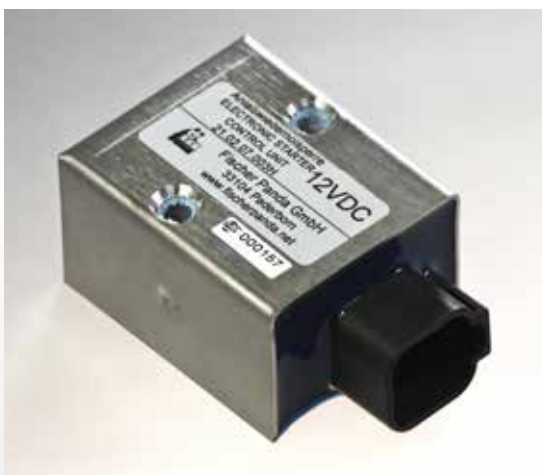
The re-start protection prevents the genset from (re-)starting while it is in use. The re-start protection thus serves to protect the electric starter from damage.

To operate an automatic system add-on for the remote control panel, it is mandatory to install a re-start protection.

The kit consists in an electronic starter monitor with bracket, a cable set, and a speed sensor.

for generators

- for AC gensets Panda 4000 - 12000 (3,500 RPM)
- for all AC gensets starting with Panda 6500 (3.600 UpM)
- for all AC gensets starting with Panda 7.5-4 (1,500 RPM)
- for all DC gensets starting with Panda AGT-DC 5000



2-pole Installation

With 2-pole or floating ground installations, the earth connection is established between engine starter system (electric starter, glow plugs, and alternator) and the battery when the diesel engine is started up. After the start-up process, this connection is automatically disconnected, and the system is operated as an isolated circuit. The 2-pole installation i.g. helps to avoid galvanic corrosion.

The kit consists in an insulated continuous duty relay incl. cable set and is either preinstalled on the genset or can be purchased as an upgrade kit.

On demand, we will be pleased to advise you regarding a suitable 2-pole installation for your generator.



2-pole Installation



Sliding Rails

Sliding Rails

Upon request, your generator can be fitted with a sliding rail. This for example allows pulling out the generator of the vehicle.

suitable

- for all vehicle AC gensets 8000x - 30x

Water Heater

Water heater for start capability up to -40 ° c.

suitable

- for all vehicle AC gensets 8000x - 30x



Air Filter

Air Filter for sandy environment

Air filter especially for sandy environment

suitable

- for all vehicle AC gensets 8000x - 30x



Remote Control Panel

for controlling and monitoring the Panda genset

Simple operation

The genset can be operated conveniently from the cabin with the Fischer Panda panels. It is even possible to switch multiple panels in parallel, or to operate them with a slave panel. This enables the user to operate the genset from different locations with great flexibility. One panel may be installed e.g. in the cabin and the other on the fly bridge, the trailer, or in the engine room.

Functions

The remote control panel in its standard version for Panda 5000 and up monitors six functions: engine cooling water temperature, winding temperature, engine oil pressure, battery charge, 230 V AC circuit, cooling water leakage (optional).

If any of these functions show an abnormal status, the genset will shut down. The remote control panel can be upgraded with an automatic add-on to a "fully automatic panel". That way, the genset can be started and stopped externally by contact with an external device (e.g. timer).

Monitoring of *)

- Engine cooling water temp.
- Winding temperature
- Engine oil pressure
- Battery charge
- 230 V AC current
- Cooling water leakage (optional)*

*) in the standard version starting with Panda 6000

iControl Remote Control Panel

*Perfect
Power*

for „Perfect Power“ i-series generators



Article No. 0000549

Digital Remote Control Panel

The integrated display serves to present the most important data of the system as well as warnings and error messages.

The control panel is equipped with four buttons for operating the Panda iControl2 controller:

- On/Off button: Switching the Panda iControl2 controller on and off
- Start/Stop button: Starting and stopping the generator, confirming values in selection menus (Enter key)
- Cursor-up button Switching between display screens (up), counting values up in selection menus
- Cursor-down button Switching between display screens (down), counting values down in selection menus.

Data output on the default display screen::

- Battery voltage (supply voltage)
- Status field for operating modes (stand-by, pre-heat, starting, override, running, autostart, stopping)
- Operating hours of the generator
- Oil pressure status
- Cylinder head temperature
- Temperature of exhaust manifold
- Winding temperature
- Speed/RPM
- Utilisation in percent

Suitable for

- all i-series generators

Options for iControl Remote Control Panel

More Control by **Master Slave Combination**

Bis zu drei Panel zusätzlich betreiben

Perfect Power

Master Panel iControl
(already included in the scope of delivery)



Article No. 0000549

Additional Remote Control Panel

A master/slave combination makes it possible to operate the genset with two or more remote control panels (up to three additional panels).

It is possible, for example, to start the generator with a remote control panel and to stop it with the other generator. The connection of a second remote control panel increases the control and therefore the security.

NOTE: One remote control panel is already included in the genset scope of delivery. You merely have to order the desired quantity of slave panels plus cables (5-core).



Data cable (5-core)
for connecting Panel and
Generator, incl. ferrules

Article No. 0002970



Up to 3 iControl Slave Panel

Article No. 0000550

Generator Operating possible from each Panel

The main panel acts as the "master panel" to which the genset is connected. The second remote control panel - the so-called "slave panel" - works in parallel with the main (master) panel, i.e., the genset can be operated with either the main panel or the slave panel.

xControl Remote Control Panel - More than a Generator Control

for „Compact Power“ x-series
Generators



xControl Generator and
Control Unit

The "xControl" management system offers a easy to operate system, a modern and simple system architecture and a modern communication interface.



Innovative Generator Control

In the age of modern data communications and energy systems, it is more and more important that the generator is able to integrate with an existing control and regulation system. Fischer Panda offers an extremely powerful and user-friendly generator control system:

- "Plug & Play" - reduced installation effort
- Modular system - easy to expand
- Logging and display of operational data - complete control at all times
- Comprehensive event logging - long term service
- Digital panel - easy to use and multilingual
- Communications interface - integration in other control systems
- Self-test of all functions - safe and reliable system
- Automatic start - remote control of generator
- Fast control - stable energy supply

Parallel operation of up to 5 control units are possible



Components for xControl



Article No. 0000557

„The “xControl” comprises of three main components which are connected together using quick-connection plugs. These are the digital panel, a connection box on the generator and the actual control unit. Through intelligent communication of these three system components, a reliable operation of the generator is ensured.

Suitable for

■ all x generators

Options for xControl Remote Control Panel

Communication-Interface

Communication between generator control and CANbus

The Fischer Panda FP Bus provides 100 % SAEJ1939 functionality. This allows the generator to be integrated into a higher level control system. The generator can be remotely started and stopped. All electrical data can be accessed via the bus: voltage, current, frequency and power. Monitoring information such as cooling, exhaust and oil temperatures etc. can also be accessed.



xControl
Communication Interface
Article No. 006107



Adapter cable 15 m
Article No. 0008899

*Compact
Power*

All advantages of the new communication interface:

1. Coordinated identification and address assignment for multiple generators in combination possible
2. No additional programming necessary with the generator's internal controller
3. Secure and reliable connectivity to external bus communication system possible
4. No overloading of the generator system due to external signals
5. preparation for more bus communication modules (E.g. NMEA2000)

Suitable for

■ all x generators

Remote Control Panel Panda P4 Control

for Compact Power Panda 4000s Generators

*Compact
Power*



The Remote Control Panel controls the

- Engine cooling water temperature
- Exhaust temperature
- Oil pressure

If any of these functions show an abnormal status, the genset will shut down.

suitable for

- 4000s generators



Remote Control Panel Panda P6 Plus

for Compact Power Panda P6 Plus

*Compact
Power*



Remote Control Panel Panda P6 Plus
Article No. 0000139

The standard version remote control panel (for models over 30 kW) monitors the following functions:

- Engine coolant temperature
- Engine exhaust temperature
- Engine oil pressure
- Battery charging
- 230 Volt AC
- Cooling-water leakage (optional)

Suitable for

- 5000 - 15000
- 18 - 65
- all /4 types (e.g. 15/4)
- AGT-DC from 5000 upwards



The generator switches itself off when any of these functions are not in the normal state. An automatic module to start (and stop) the generator via external devices such as timers is optionally available.

Options for P6 Plus Remote Control Panel

Master-Slave Combination

for more Monitoring and Control



Panda P6 Plus
Remote Control Panel 1



Panda P6 Plus
Remote Control Panel 2

Additional Remote Control Panel

A master/slave combination makes it possible to operate the genset with two remote control panels.

For example, the genset can be started up with one remote control panel and stopped with the other. Connecting a second remote control panel affords better control options, which will increase safety

A master/slave combination consists in:

- 2 x Panda P6 Plus remote control panels and
- 2 x slave panel adapters.

NOTE: One remote control panel is already included in the genset scope of delivery.

For the Master-Slave configuration the following components are required::

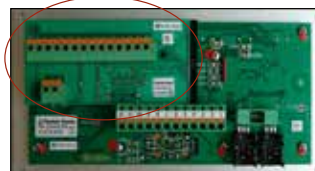


1



1 x Remote Control Panel P6 Plus
Article No. 0000139

2



2 x Master-Slave Adapter
Article No. 0000133

3



16-core cable for
connecting both panel

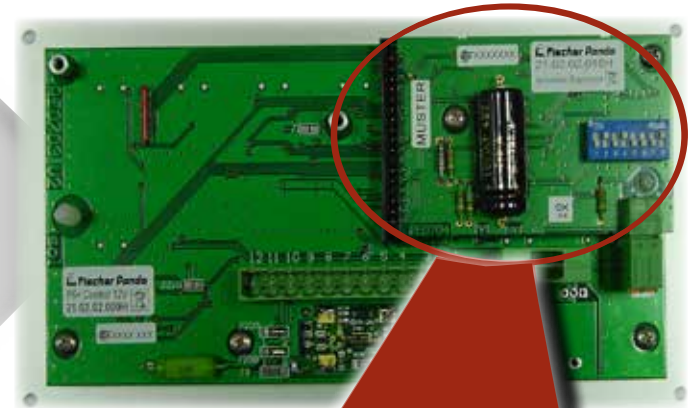
Ad-on modules for Panel P6 Plus

Automatic system add-on modul for asynchronous gensets

*Compact
Power*



Remote Control Panel Panda P6 Plus



Automatic system
add-on on the back
of the panel P6+

Starting the Generator externally with an external device e. g. timer

The standard P6 Plus remote control panel can be upgraded with an automatic add-on to a „fully automatic panel“. That way, the genset can be started and stopped externally with an external device (e.g. timer). The automatic starting procedure consists of pre-heating (heat) and operating the electric starter (start). The times for “heat”, “start” and “stop” are individually adjustable. To operate an automatic system add-on, it is necessary to install a re-start protection.



Ad-on modules for Panel P6+

■ with Remote Control Panel Panda P6 Plus

Remote Control Panel AGT Control

for Hybrid Power DC Generators



AGT Control Panel
Standard
Art.-No. xxx

Standard Remote Control Panel

The Remote Control Panel controls the

- Engine Cooling Temperature
- Exhaust Temperature
- Oil Pressure

If any of these functions show an abnormal status, the genset will shut down.



Cutom Panels

*Hybrid
Power*

Panel with LCD display for increased functionality

The AGT control panel is fitted with a graphic display. The display serves to indicate a variety of warning and shut-down functions, which improves safety and convenience compared to a standard remote control panel.

The warning and shut-down functions can be adjusted individually. By default, the system is set so that the maximum operating safety and reliability are ensured. This means that the genset will cut off immediately if an oil pressure or temperature error is found.

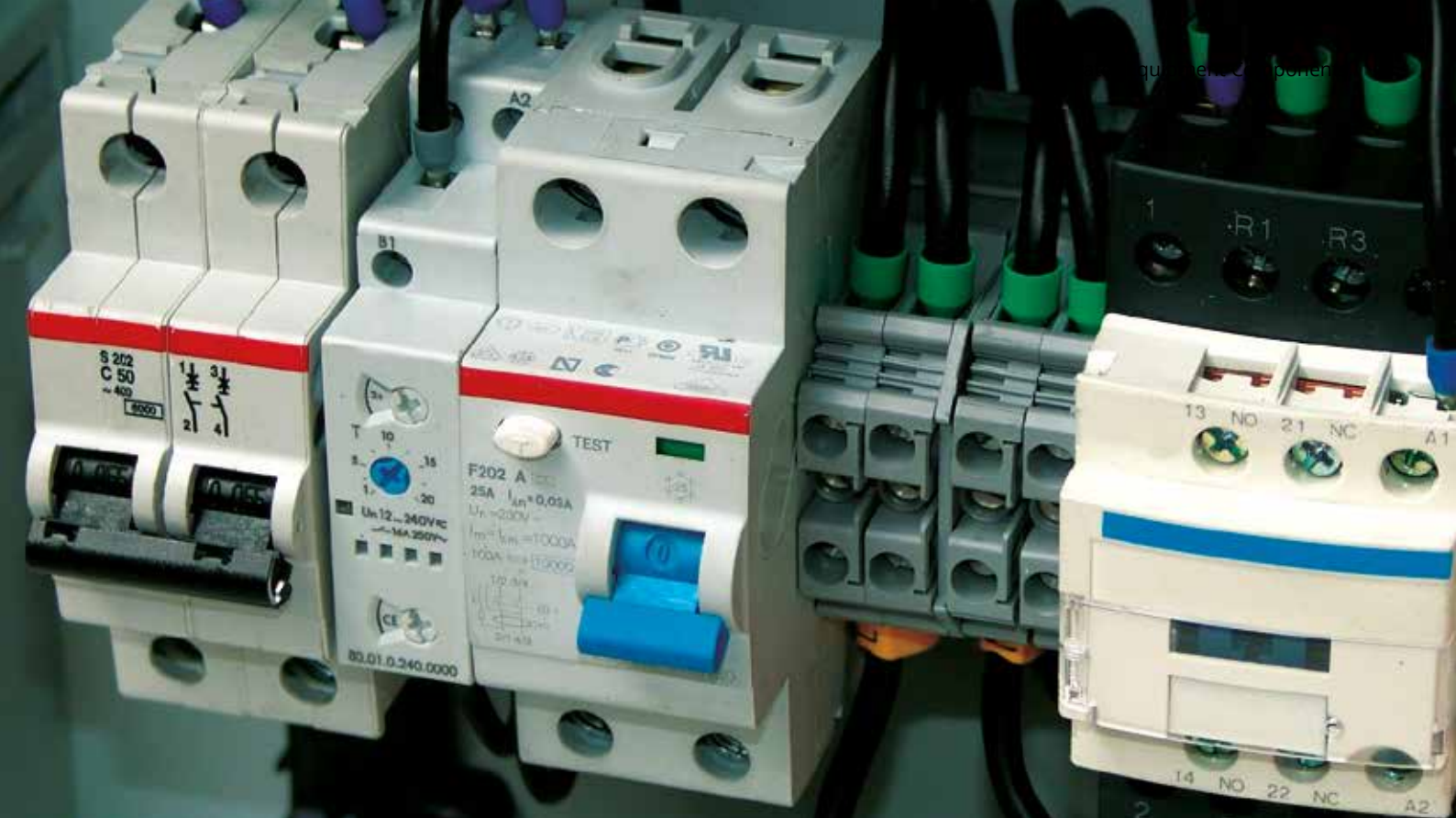
Suitable for generators

- all DC generators AGT-DC from Panda 5000 upwards
- AC Generators Panda 18 - 65
- AC Generators all /4 types from Panda 7,5/4 (z.B. 15/4) upwards



AGT Control
Custom Panel black
Article No. 0005943





Current Distribution Switching Monitoring

Intelligent solutions for a safe and reliable power supply

It is possible to expand an existing installation or to combine it with the control system of the ship or vehicle.

Current Distribution

Alternating current current
distribution

Switching

Automatic shore-side power
genset switching

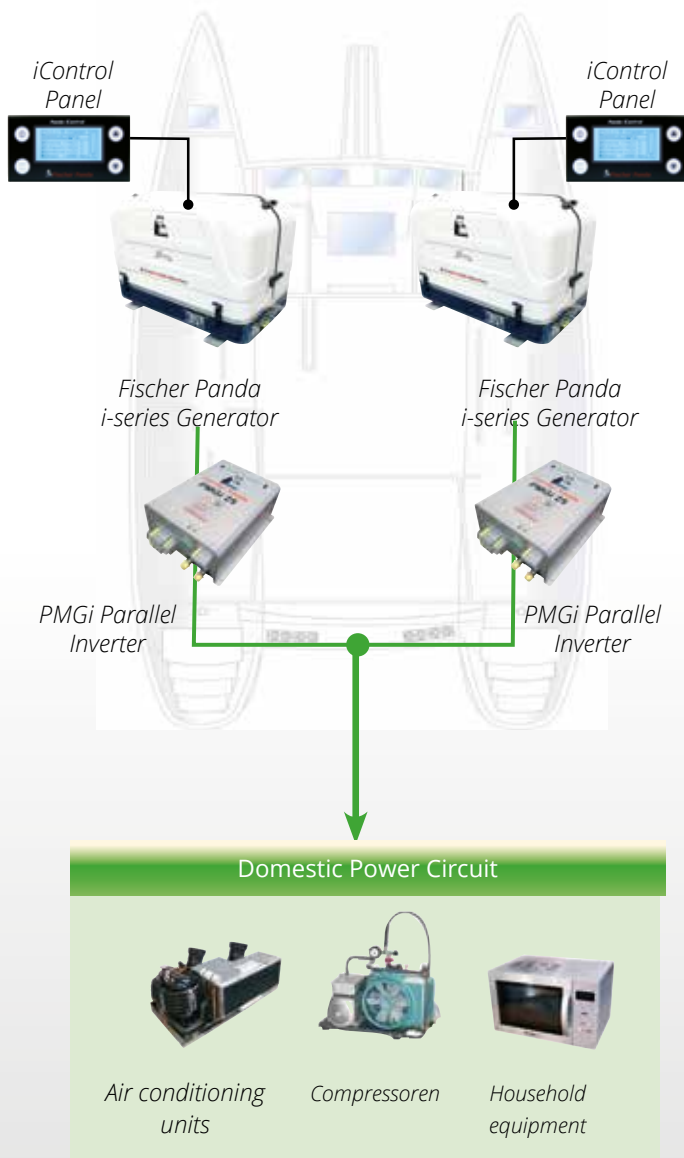
Monitoring

Automatic on-board monitorin

Parallel Switching Box for i-Generators

More comfort and security on board

Several i-series generators can easily be used in parallel, also generators of different performance classes. No additional cables or boxes are required. Each generator is completely independent and can be operated individually. In parallel, both generators are equally loaded.



PMGi Parallel Inverter

- Multiple generators can be easily connected in parallel - even if they have different outputs using "parallel" inverters (optional).
- Load-Sharing: both generators are equally loaded when operating in parallel.
- Ideal for applications such as multihulls which may benefit from installing various smaller generators to improve weight distribution. Katamarane und Trimarane.

suitable for

- all i-series Generators

Parallel Switching Box for x-Generators

„Plug and Play“ load switching using xControl

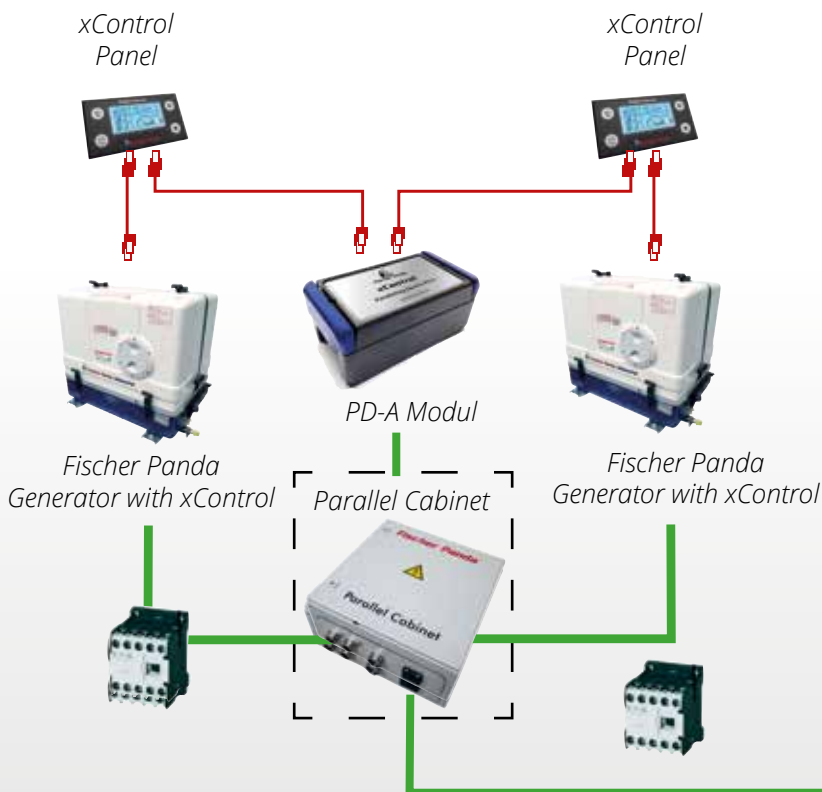
The xControl PD-A (Parallel Device) module allows two Fischer Panda xControl AC generators to be connected in parallel. Electrical loads can be switched from one generator to another (uninterrupted) or their outputs can be combined (load sharing).

suitable for

- 3,8 - 15,3 kW 1ph
- 6,5 - 20,4 kW 3ph
- 25,5 - 40,0 kW 3ph
- 42,5 - 55,2 kW 3ph



The PD-A is connected to each generator's data bus. The generators are set to "parallel-mode" via the xControl display menu. The PD-A monitors both generators and synchronises their output. The load is switched from one generator to the other when their outputs are synchronised. Both single and three phase generators can be connected in parallel using the PD-A module.



All generators with xControl can operate in parallel



Automatic Shore-Side / Generator Power Switch

Automatic switch-over, when the shore-side power is not available

The shore-side/genset switching unit serves to control the shore-side power in combination with a genset. The switching unit monitors the connection to the shore-side power supply. The AC genset is started up automatically when the shore-side power is not available.

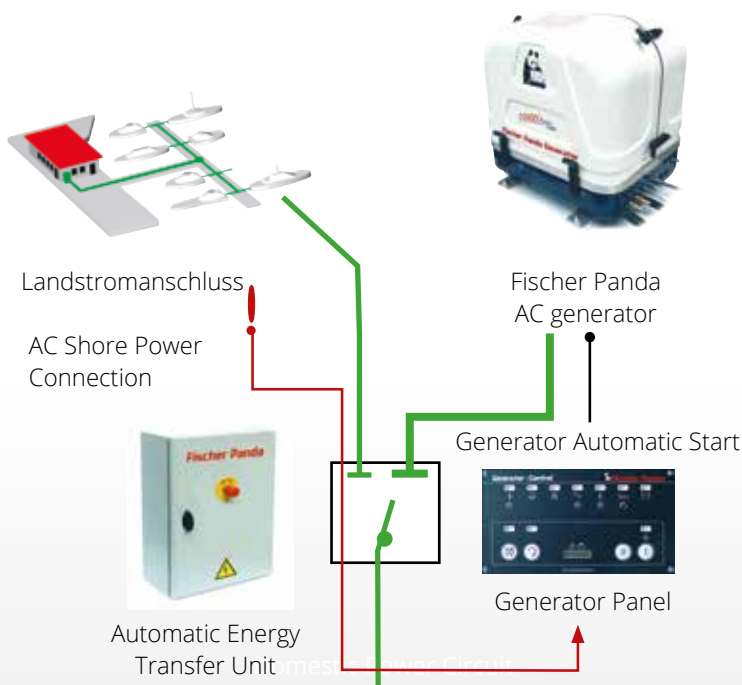
Once the shore-side power supply is available again, the switching unit can switch back so that the shore-side power is again used as the main power source. Stopping the generator leads to an immediate switch back to the shore-side.



Automatic shore-side/generator power switch

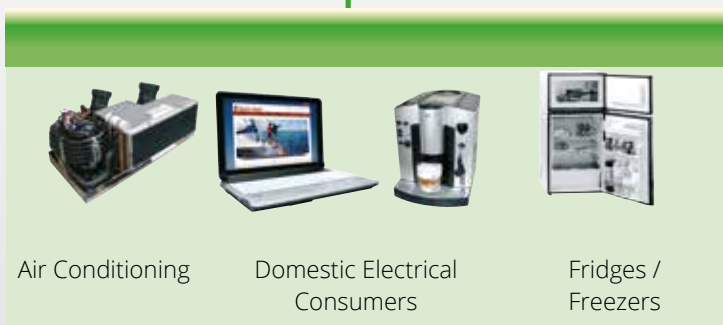


Opened switch unit



suitable for

- 3,8 - 10,2 kW (230 V Switch)
- 6,5 - 24,0 kW (400 V Switch)





Accessory Programme

Marine installation kits
Installation accessories
Operation accessories
Servicekits Standard
Servicekits Plus



Installations kits

Basis version

Premium version

Complete installation kits

To keep the installation as simple as possible, Fischer Panda offers complete installation kits. The kits comprise all components that are needed for the complete installation of the cooling water, exhaust gas, and fuel systems of the genset.

Marine installation kits

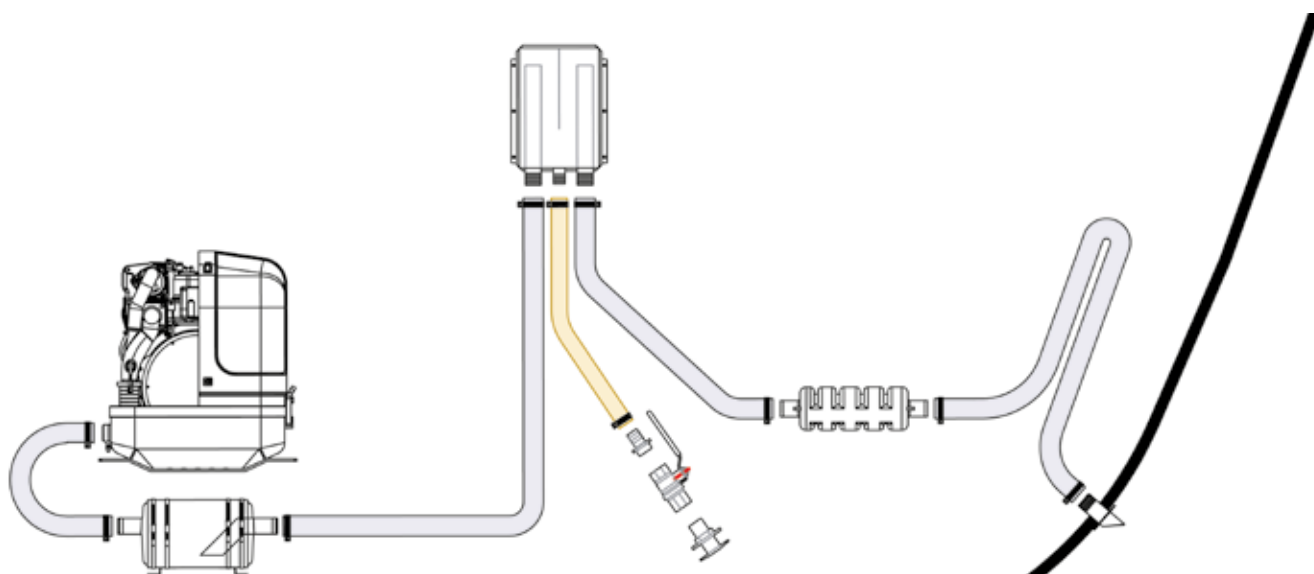
The installation kits by Fischer Panda are available in two versions:

Basic version

The basic version contains all components required for a standard installation

Premium Version

The premium version additionally contains an exhaust gas/water separator unit for greater demands concerning noise reduction. The exhaust gas/water separator unit strongly reduces the exhaust noise. The "water splash" in particular is eliminated. Additionally, the exhaust gas/water separator unit functions as an exhaust gas goose neck, which prevents the water from flowing back into the generator.



Example exhaust system installation

Components installation kits

The basic version of the installation kit contains the following components for the cooling water, exhaust gas, and fuel installations:

Cooling Water Installation

- Through-hull with filter
- Seacock
- Hose connection
- Sea water filter
- Hose clamps
- Coolant hose (4m)
- Ventilation valve

Exhaust installation

- Water collector
- Hull outlet
- Hose connection
- Hose bush
- Hose clamps
- Exhaust hose (5m)
- Silencer (optional)
(only premium version)

Fuel Installation

- Fuel hose
- Hose clamps
- Non-return valve
- Fuel filter with water separator (optional)
- Fuel quick-release fasteners (optional)



Installationskit
Basic version

Fuel installation

- Fuel hose
- Hose clamps
- Non-return valve

Cooling water installation

- Through-hull with filter
- Seacock
- Hose connection
- Sea water filter
- Hose clamps
- Coolant hose (4m)
- Ventilation valve

Exhaust installation

- Water collector
- Hull outlet
- Hose connection
- Hose bush
- Hose clamps
- Exhaust hose (5m)
- Exhaust / water separator (only premium version)



Premium version
contains an additional
water collector

Basic version installation kits

without exhaust/water separator

The basic version installation kits contains all components except the exhaust/water separator.

For hose diameter sea the appendix

Article No.	Article	Hose-ø
		Cooling water/exhaust/fuel
0006278	Installation Kit Basis 12/40	12 / 40 / 8 mm
0000677	Installation Kit Basis 20/40	20 / 40 / 8 mm
0006300	Installation Kit Basis 20/50	20 / 50 / 8 mm
0000673	Installation Kit Basis 25/50	25 / 50 / 8 mm
0006273	Installation Kit Basis 25/60	25 / 60 / 8 mm
0027432	Installation Kit Basis 25/75	25 / 75 / 8 mm
0006291	Installation Kit Basis 30/60	30 / 60 / 8 mm
0006304	Installation Kit Basis 40/60	40 / 60 / 8 mm
0024649	Installation Kit Basis 40/75	40 / 75 / 8 mm

Premium version installation kits

with Exhaust / water separator

For lowest exhaust noises, you should choose the premium version. The premium includes an exhaust/water separator in addition to the components of the basic version. The exhaust / water separator reduces the exhaust noise.

For hose diameter sea the appendix

Article No.	Article	Hose-ø
		Cooling water/exhaust/fuel
0006280	Installation Kit Basis 12/40	12 / 40 / 8 mm
0000674	Installation Kit Basis 20/40	20 / 40 / 8 mm
0006301	Installation Kit Basis 20/50	20 / 50 / 8 mm
0000676	Installation Kit Basis 25/50	25 / 50 / 8 mm
0006274	Installation Kit Basis 25/60	25 / 60 / 8 mm
0006275	Installation Kit Basis 25/75	25 / 75 / 8 mm
0006296	Installation Kit Basis 30/60	30 / 60 / 8 mm
0023180	Installation Kit Basis 30/75	30 / 75 / 8 mm
0006305	Installation Kit Basis 40/60	40 / 60 / 8 mm
0006277	Installation Kit Basis 40/75	40 / 75 / 8 mm



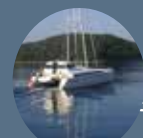
Installation accessories individual components

for marine and vehicle gensets

Aside from the installation kits, the Fischer Panda installation accessories can also be ordered as individual components.

You find the available installation accessories on the following pages.

Cooling water system
Exhaust installation
Fuel installation
Attachment system

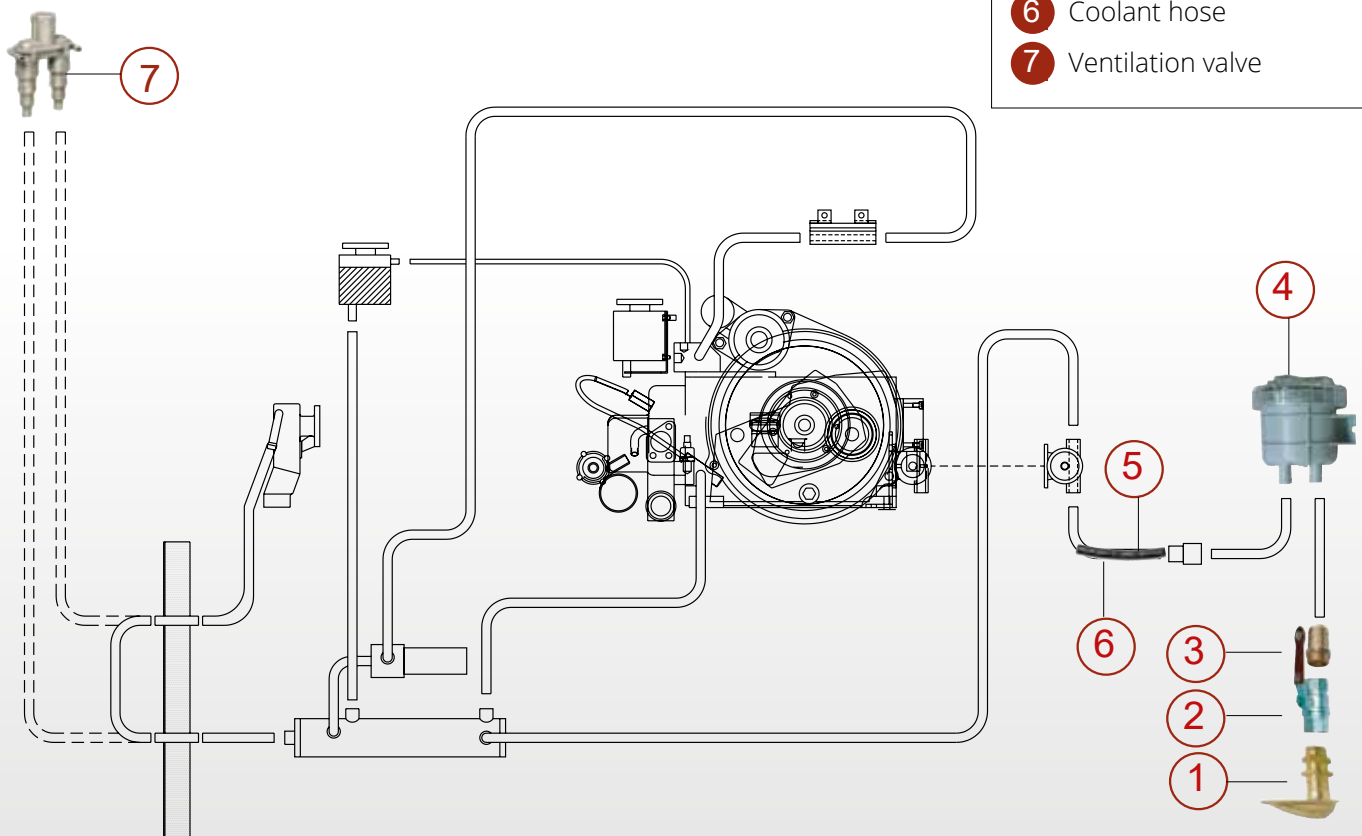




Installation accessories individual components

Cooling system for marine gensets

- 1 Through-hull with filter
- 2 Seacock / ball cock
- 3 Hose connection
- 4 Seawater filter
- 5 Hose clamps
- 6 Coolant hose
- 7 Ventilation valve



① Through-hull with filter

Threaded coupling connected to the cooling water hose in combination with a ball valve or a hose nozzle.

Materials: brass

Through-hull with filter	
Article No.	Connecting Diameter
0000815	1/4"
0000816	3/4"
0000814	1"
0000823	1 1/4"
0000813	1 1/2"
21.08.01.024	2"
0006822	2 1/2"



Through-hull with filter

② Sea valve / ball valve

brass, 2 x internal thread. Suitable for water and diesel.



Seeventil / Kugelhahn

Artikel-Nr.	Anschluss-Durchmesser IG
0009591	1/4"
0002656	3/8"
0002657	1/2"
0002658	3/4"
0002659	1"
0002660	1 1/4"
0002661	1 1/2"
0002653	2"
0009588	2 1/2"

③ Hose connection

see „Optionales accessories“



Hose connection

④ Cooling water filter / Seawater filter

of the filter without unscrewing the cover. Fast filter cleaning. Rarely requires cleaning.

Material: Housing = Polypropylen,
Filter element = Polyamid,
Cover = Polykarbonat

Cooling water filter / Seawater filter		
Article No.	Specification	Connection ø
0006828	Kühlwasserfilter	12,7 mm (1/2")
0006829	Kühlwasserfilter	19,1 mm (3/4")
0006830	Kühlwasserfilter	15,9 mm (1/2")
0000833	Seewasserfilter	1/2"
0000834	Seewasserfilter	3/4"
0000835	Seewasserfilter	1"
0000836	Seewasserfilter	1 1/4"
0006831	Seewasserfilter	1 1/2"



Seawater filter



Hose connection

⑤ Hose clamps

see „Optional accessories“

⑥ Cooling water hose with inner wire spiral, transparent

Made from transparent PVC with steel worm helix insert.
Suitable for water and waste water (suction and pressure)

Water hose with inner wire spiral	
Article No.	Diameter
0002846	12 mm
0009845	16 mm
0002847	19 mm
0002848	25 mm
0002845	30 mm
0009844	38 mm



Cooling water hose with inner wire spiral

⑦ Ventilation valve (plastic)

To avoid water ingress to the engine after it is switched off, if the genset cannot be installed at least 600 mm above the waterline.

Ventilation valve	
Article No.	Specification
0000838	Ventilation valve without hose
0013548	Ventilation valve V with valve 38 mm
0006832	Ventilation valve with valve and hose



Ventilatooin valve

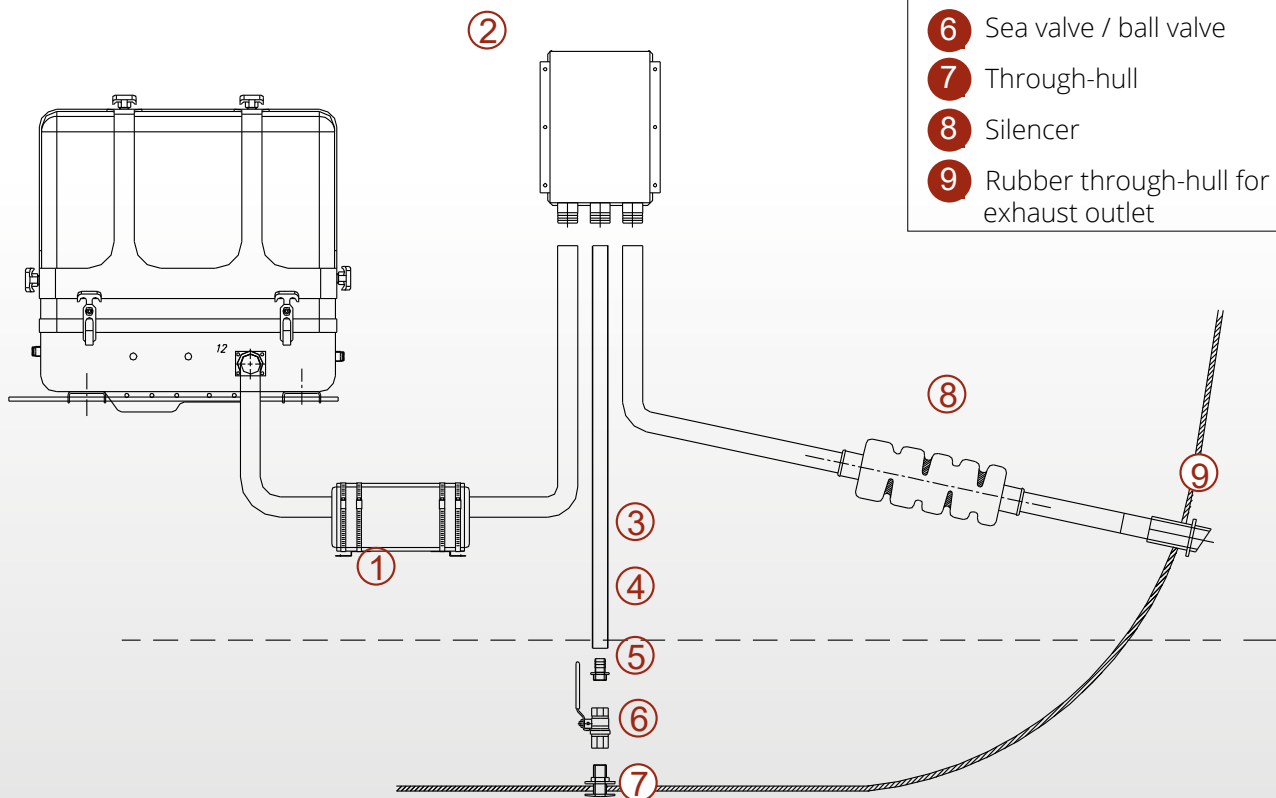




Installation accessories individual components

Exhaust sytem for marine gensets

- ① Water lock
- ② Exhaust/water separator
- ③ Cooling water hose / exhaust hose
- ④ Hose clamps
- ⑤ Threaded coupling with hose connection
- ⑥ Sea valve / ball valve
- ⑦ Through-hull
- ⑧ Silencer
- ⑨ Rubber through-hull for exhaust outlet



① Water lock / silencer

Material: made from stainless steel and sheathed in rubber.

Installation: The water lock is fitted with attachment tabs and is thus very easy to install. It is installed at the lowest point of the exhaust system.

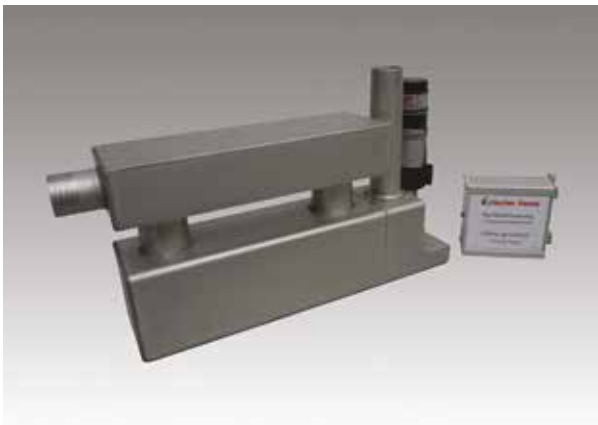
The water lock also provides particularly good noise reduction.



Water lock / Silencer

Water lock / silencer

Article No.	Connecting diameter
0000830	40 mm
0000831	50 mm
0000832	60 mm



Active water lock

Active water lock

Article No.	Connection diameter
21.08.02.002	40-40-18 mm

Backlash control for water collector

Article No.	Article
31.42.02.018	Backlash control for water collector

① OPTIONAL: Active water lock

(Item is not included in installation kit, can be ordered as optional item).

For difficult installation situations and/or if the genset is used with severe inclination, the use of the active water lock in combination with a follow-up control and a pump ensures the reliable emptying of the water lock, which minimises the risk of the engine being flooded.

Pump

Article No.	Specifikation
40.07.02.009	Electrical circulation pump type CM30P7-1 12 V / 16 mm connectors with DT 04-2P



Exhaust/water separator



Exhaust/water separator
with noise reduction
coating

② Exhaust/water separator

Material: stainless steel
The exhaust/water separator by Fischer Panda allows for the physical separation of exhaust and seawater and acts as a goose neck at the same time. Exhaust and water are evacuated separately with almost no pressure. The exhaust noises emanating from the exterior of the yacht are strongly diminished. The “water splash” in particular is eliminated. The noise reduction coating can further reduce the exhaust noise.

Exhaust/water separator	
Article No.	Connection diameter
0002221	40-25-40 mm, soundproof
0002224	40-30-40 mm, soundproof
0002226	50-40-50 mm, soundproof
0002228	60-50-60 mm, soundproof

③ Exhaust hose with wire helix inside

Materials: woven rubber with wire inner helix
The exhaust hose is extremely lightweight and flexible. Bends with a radius of 2 x the hose diameter can be routed.

Exhaust hose with wire inner helix	
Article No.	Connecting diameter
0000036	20 mm
0002867	25 mm
0000037	30 mm
0000197	40 mm
0002868	51 mm
0002869	60 mm



Exhaust hose with
wire helix inside

③ Exhaust hose Super Silent

(Item is not included in installation kit, can be ordered as optional item.)

Materials: woven rubber with wire inner helix

Low noise: noise reduction by up to 7 dBA



Exhaust hose „Super Silent“

④ Hose clamps

see „Optional accessories“



⑤ Hose connection

see „Optional accessories“



⑥ Sea valve / ball valve

press brass up to 40 bar, 2 x internal diameter. Suitable for water and diesel.

Sea valve / ball valve	
Article No.	Connection Diameter IG
0009591	1/4"
0002656	3/8"
0002657	1/2"
0002658	3/4"
0002659	1"
0002660	1 1/4"
0002661	1 1/2"
0002653	2"
0009588	2 1/2"



Sea valve / ball valve

7 Brass through-hull for exhaust outlet

Brass through-hull, which is connected to the coolant hose or exhaust hose in combination with a ball valve or a hose nozzle. Version without a sieve.

Brass through-hull	
Article No.	Connection Diameter
0000817	3/4"
0000818	1"
0000819	1 1/4"
0000820	1 1/2"
0000821	2"
0013586	2 1/2"



Brass through-hull



Marine silencer

9 Rubber through-hull with external mirror for exhaust outlet

(Item is not included in installation kit, can be ordered as optional item).

Simple and flexible installation. The element can also be adjusted to the curved ship's side wall. From the outside, the through-hull is covered with a stainless steel rosette. For the installation of the exhaust hose, a hose connection is required (for hose connector, see „Optional accessories“).

8 Silencer

(Item is not included in installation kit, can be ordered as optional item.).

See „Optional accessories“



Rubber through-hull	
Article No.	Specification
0006823	Ø 40 mm
21.08.01.015	Ø 50 mm
21.08.01.016	Ø 60 mm



Installation accessories for individual
componente

Cooling and exhaust system for vehicle gensets



① Stepless fan controller for all AC fans

for gradual speed control

- Characteristics
- Main switch with bypass function and manual/automatic toggle
 - Speed specification or setpoint specification on the equipment front face
 - Operation indication integrated in setpoint potentiometer
 - Speed (nmin/nmax) manually adjustable under the equipment cover



Gradual fan control with temperature sensor and hose connector

Article No.	Specification
0006044	1-phasig, 230 V, 2,5 A
0006040	1-phasig, 230 V, 6 A
0006043	3-phasig, 400 V, 5 A



Gradual fan control with temperature sensor and hose connector



Exhaust pipe elbow

② Exhaust pipe elbow 90 °

Exhaust pipe elbow set with silicone end pieces for connecting the exhaust system to the genset. The pipe elbow is mounted directly to the exhaust port of the genset and makes it possible to route the exhaust gas in any direction. Simultaneously, vibrations are being compensated for.

Exhaust pipe elbow	
Article No.	Connection Diameter
0004637	NW 40 mm

③ Cooling water / exhaust lead-through with one pipe

Cooling water roof lead-through, consisting in a V2A duct with 90° elbow. Square connection plate for sealing the roof. Also suitable for exhaust gas lead-throughs.

Cooling water roof lead-through	
Article No.	Connection ø
0002083	40 mm
0002084	50 mm



Cooling water lead-through



④ Cooling water lead-through with 2 pipes

Cooling water roof lead-through, two ducts for feed and return line consisting of two V2A pipes with 90° elbow. Square connection plate for sealing the roof.

Cooling water roof lead-through	
Article No.	Specification
0002080	2 x Ø 20 mm
0002081	2 x Ø 25 mm
0002082	2 x Ø 30 mm
0002085	2 x Ø 50 mm

⑥ Exhaust hose

Corrugated exhaust tubes by HYDRA, fully leak-proof

Abgasschlauch HYDRA	
Artikel-Nr.	Spezifikation
0009864	DN 30
0009863	DN 40
0009867	DN 50
0009869	DN 60
0009866	DN 75



Exhaust hose HYDRA

7 Cooling water hose

Rubber radiator hose, resistant to anti-freeze (e.g. glycols). Synthetic woven inlay. Temperature range: -40 °C to +100 °C continuous operation

Cooling water hose	
Article No.	Diameter
0000041	Ø 8 mm
0000042	Ø 10 mm
0002837	Ø 12 mm
0002839	Ø 16 mm
0009843	Ø19 mm
0002841	Ø 20 mm
0002842	Ø 25 mm
0002843	Ø 30 mm
0002844	Ø 40 mm



Cooling water hose

8 Hose clamps

see „Optional accessories“



Silicone exhaust hose

10 External circulation pump

External circulation pump	
Article No.	Specification
0012294	230 V / 50 Hz

9 Silicone exhaust hose

The silicone hose is flexible, low-noise, temperature resistant to 280 °C, and heat-insulated. Vibration noise is being compensated for.

Silicone exhaust hose	
Article No.	Diameter
0009868	Ø 30 mm
0000114	Ø 40 mm
0002835	Ø 50 mm



External circulation pump

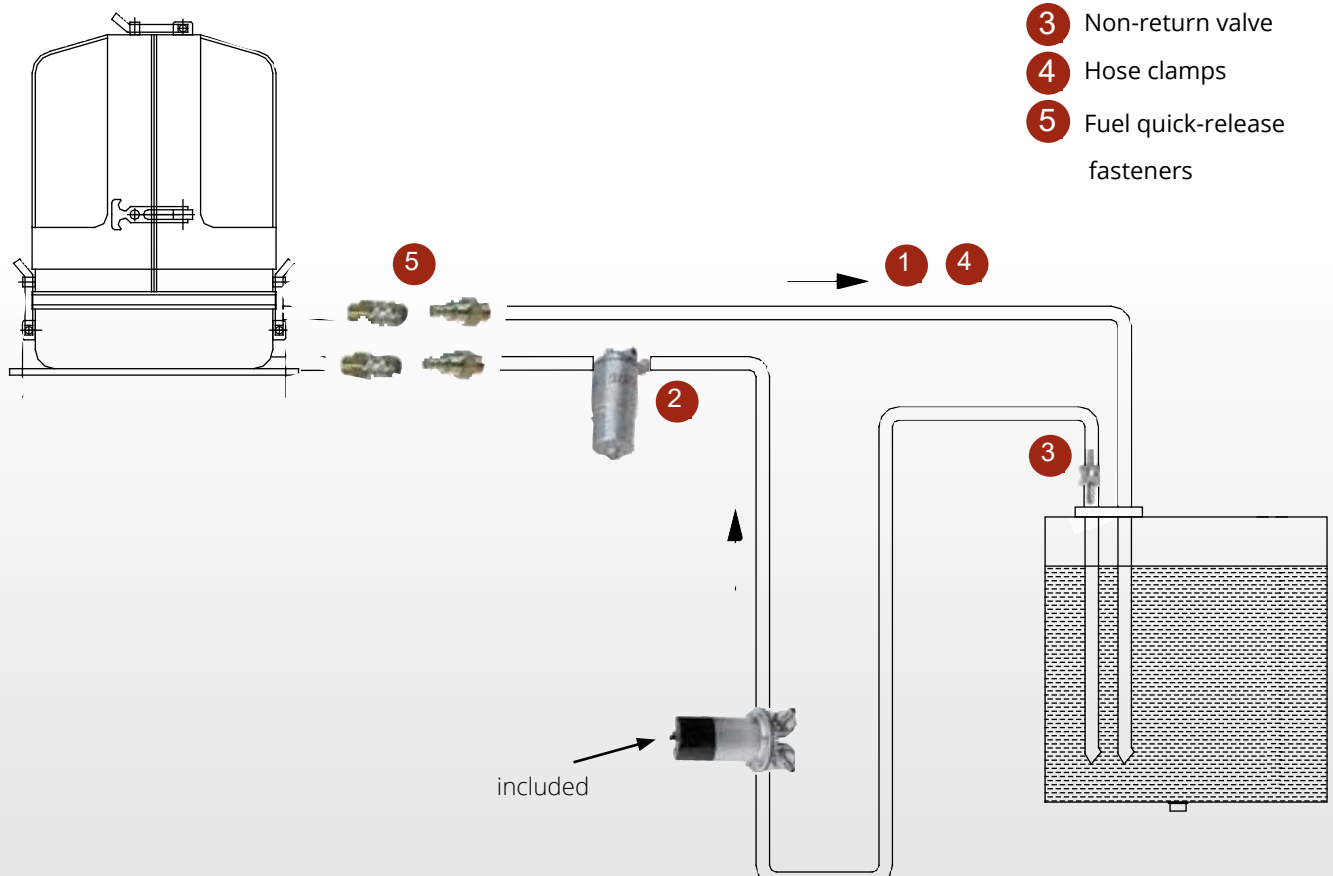


Installation accessories individual components

Fuel System

Marine and vehicle

- 1 Fuel hose
- 2 Fuel filter with water separator
- 3 Non-return valve
- 4 Hose clamps
- 5 Fuel quick-release fasteners



① Fuel hose

Material: oil-resistant rubber compound. With synthetic woven inlay.
Temperature range: -30 °C to +100 °C continuous operation

Fuel hose	
Article No.	Diameter
0000082	Ø 8 mm inner



Fuel hose

② Fuel filter with water separator



Fuel filter with water separator	
Article No.	Type
0004636	Vetus WS 180

Replacement element	
Article No.	Specification
0011997	Fuel prefilter element type WK 842/2 with water separator

③ Non-return valve

If the fuel tank is to be installed above the level of the generator, then a non-return valve must be installed in the fuel return line to ensure that no fuel is fed into the injection pump via the return line.

Non-return valve		
Article No.	diameter (internal thread)	Specification
0000844	ø 8 mm	Aluminium
0000845	ø 8 mm	Synthetic



Non-return valve

④ Hose clamps

see „Optional accessories“



Hose clamps



Nipple quick-release fastener



Coupling quick-release fastener

⑤ OPTIONAL: Fuel quick-release fasteners

For hose separation. For tightening on fuel hoses, copper rings are required in addition to the coupling and the hose adapter.

Fuel quick-release fasteners

Article No.	External thread	Nominal diameter
0002739	1/4" female	NW 5
0002740	1/4" male	NW 5

Hose adapter

Article No.	Specification
0002058	Inner thread 1/4" d5,5 D8 L33

Copper ring

Article No.	Specification
0002500	Copper ring DIN7603 13x18x1,5 solid copper



Shock-mount, captive

Shock-mount, non-captive

Shock-mount, captive

Attachment System

for Marine and Vehicle Gensets

Shock-mount, captive

The captive shock-mounts are suitable for marine and vehicle gensets. They absorb the vibrations of

Article No.	Specification
0000681	Rubber mounts kits 4000s-4800i (4 Stck.)
0002750	BRB 60 A40 M10 SH40 (Set = 4 Stck.)
0009648	BRB 60 A40 M10 SH50 (Set = 4 Stck.)
0002752	BRB 70 A40 M12 SH40 (Set = 4 Stck.)
0002753	BRB 80 A40 M10 SH40 (Set = 4 Stck.)
0002754	BRB 80 B50 M10 SH50 (Set = 4 Stck.)
0002756	BRB 110 M16 SH40 (Set = 4 Stck.)
0002757	BRB 110 M16 SH50 (Set = 4 Stck.)
0002759	BRB 150 M16 SH40 (Set = 4 Stck.)
0009647	BRB 180 SH40 M20 (Set = 4 Stck.)



the generator, thereby minimising the noise, and the generator is secured against slipping or breaking off. For item numbers for the corresponding gensets, please refer to the reference table.



Shock-mount, non-captive

The non-captive shock-mounts are suitable for marine gensets, only. For item numbers for the corresponding gensets, please refer to the reference table.

Article No.	Specification
0009666	Rubber mounts type "C" 30x40mm with double sided internal thread M8, SH 55° with screwed mounting plate and 1 locked stud bolt M8x22
0009669	rubber mounts type „C“ 40x40mm with double side internal thread M8, SH 55° with screwed mounting plate
009675	rubber mounts type „C“ 50x50mm with double side internal thread M10, SH55° with screwed mounting plate and 1 locked stud bolt M10x20

Shock-mount, captive, with safety rope

Article No.	Specification
0006267	rubber mounts Kit Ferretti 50x40
0006268	rubber mounts Kit Ferretti 50x40
0006276	rubber mounts Kit Ferretti 75x45





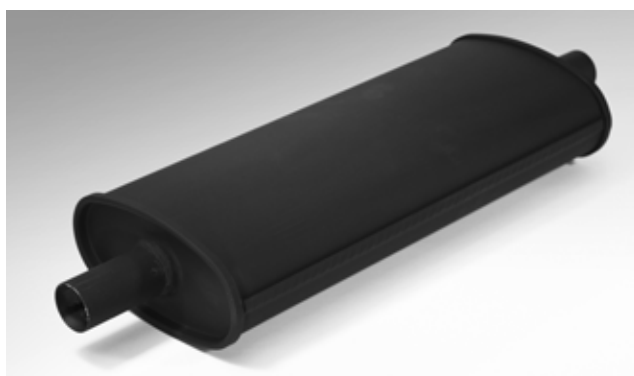
Silencer
Hose clamps
Hose connector
T-pieces
Electric change pump

Optional accessories

for marine and vehicle gensets

Silencer for marine gensets

Silencer for marine generators	
Article No.	Specification
40.02.01.021	Exhaust silencer Vetus MP45
0014004	Exhaust silencer Vetus MP50
0004198	Exhaust silencer Vetus MP60
40.02.01.024	Exhaust silencer Vetus MP75
40.02.01.025	Exhaust silencer Vetus MP90
40.02.01.026	Exhaust silencer Vetus MP100



Vehicle muffler



Muffler for vehicle gensets

Schalldämpfer für Fahrzeug-Generatoren

Artikel-Nr.	Bezeichnung
0001831	Abgasschalldämpfer, trocken mit Aufhängevorrichtung und Abdeckung, ø 40 mm

Hose clamps

Worm gear SX hose clamp

Hose clamps	
Article No.	Specification
0002529	Ø 008-016 mm Breite 9mm
0002531	Ø 012-022 mm Breite 9mm
0002532	Ø 016-025 mm Breite 9mm
0000054	Ø 020-032 mm Breite 9mm
0002533	Ø 025-040 mm Breite 9mm
0002534	Ø 032-050 mm Breite 9mm
0002535	Ø 040-060 mm Breite 9mm
0002536	Ø 060-080 mm Breite 9mm
0009499	Ø 090-110 mm Breite 9mm
0002537	Ø 020-032 mm Breite 12mm
0002538	Ø 025-040 mm Breite 12mm
0002539	Ø 032-050 mm Breite 12mm
0002540	Ø 040-060 mm Breite 12mm
0002541	Ø 050-070 mm Breite 12mm
0002542	Ø 060-080 mm Breite 12mm
0002543	Ø 080-100 mm Breite 12mm
0009500	Ø 090-110 mm Breite 12mm
0009501	Ø 110-130 mm Breite 12mm
0004682	Ø 120-140 mm Breite 12mm

The SX clamp with a 9 mm wide strap as per DIN 3017. The clamp is supplied in its standard version with a 7 mm hexagon screw head, WAF 7. Standard diameters range from 8 mm to 110 mm. The clamping space ranges up to 20 mm.



Hose clamp

Jointed bolt clamps as per DIN 3017

are characterised by their extremely high clamping forces. The jointed bolt clamp installs effortlessly with manual, pneumatic, or electric standard tools.
Materials: strap: stainless steel 1.4510 / clamp head parts: galvanised steel up to 20 mm

Hose clamp	
Article No.	Specification
0002546	W2 Ø 27-18mm
0002547	W2 Ø 34-18mm
0002548	W2 Ø 39-18mm
0002550	W2 Ø 45-20mm
0002551	W2 Ø 50-20mm
0002552	W2 Ø 53-20mm
0002553	W1 Ø 58-20mm
0002554	W2 Ø 58-20mm
0002555	W2 Ø 62-20mm
0002556	W2 Ø 66-20mm
0002557	W2 Ø 70-25mm
0009517	W1 Ø 76-25mm
0009518	W2 Ø 82-25mm
0002558	W2 Ø 101-25mm



Hose clamp

Hose clamps

Material: brass

Hose connection	
0002675	1/8" AG x 6 mm hose connection
0002676	1/8" AG x 8 mm hose connection
0002677	1/4" AG x 6 mm hose connection
0002678	1/4" AG x 8 mm hose connection
0002679	1/4" AG x 10 mm hose connection
0002680	1/4" AG x 13 mm hose connection
0002682	3/8" AG x 8 mm hose connection
0002683	3/8" AG x 10 mm hose connection
0002684	3/8" AG x 13 mm hose connection
0002685	3/8" AG x 16 mm hose connection
0009603	1/2" AG x 8 mm hose connection
002686	1/2" AG x 10 mm hose connection
0002687	1/2" AG x 13 mm hose connection
0002688	1/2" AG x 16 mm hose connection
0002689	1/2" AG x 19 mm hose connection
0002673	3/4" AG x 13 mm hose connection
0002690	3/4" AG x 19 mm hose connection
0002691	3/4" AG x 25 mm hose connection
0002674	1" AG x 20 mm hose connection
0002692	1" AG x 25 mm hose connection
0002693	1" AG x 32 mm hose connection
0002699	1-1/4" AG x 30 mm hose connection
0009602	1" 1/4 AG x 32mm hose connection
0002694	1-1/4" AG x 40mm hose connection



Schlauchverbinder, 90 °

Hose connector 90 °

Material: brass

Schlauchverbinder 90 °

Artikel-Nr.	Spezifikation
0008645	90° Edelstahl Ø 12/12mm
0002025	90° Edelstahl Ø 20/20mm
0002026	90° Edelstahl Ø 25/25mm
0002027	90° Edelstahl Ø 30/30mm
0002028	90° Edelstahl Ø 40/40mm
0002029	90° Edelstahl Ø 50/50mm
0002030	90° Edelstahl Ø 60/60mm
0002031	90° Edelstahl Ø 75/75mm

Hose connector, straight

Material: brass

Hose connector, straight

Artikel-No.	Spezifikation
0002015	Ø 12 mm VA
0002016	Ø 14 mm VA
0002017	Ø 16 mm VA
0002018	Ø 20 mm VA
0002019	Ø 25 mm VA
0002020	Ø 30 mm VA
0002022	Ø 40 mm VA
0002023	Ø 50 mm VA
0002024	Ø 60 mm VA



Hose connector, straight

Hose connector, straight, reduced

Material: Brass



Hose connector, straight, reduced

Hose connector, straight, reduced

Artikel-No.	Spezifikation
0001994	Ø 16 mm / 14 mm
0001995	Ø 08 mm / 06 mm VA
0001996	Ø 12 mm / 08 mm VA
0001997	Ø 16 mm / 12 mm VA
0001998	Ø 20 mm / 12 mm VA
0001999	Ø 20 mm / 16 mm VA
0002000	Ø 25 mm / 20 mm VA
0002001	Ø 30 mm / 25 mm VA
0002002	Ø 40 mm / 30 mm VA
0002003	Ø 50 mm / 40 mm VA
0002004	Ø 80 mm / 60 mm VA

T-pieces

Material: stainless steel

T-Stücke	
Artikel-Nr.	Specification
0002033	Ø 08/08/08 mm VA
0002038	Ø 12/12/12 mm VA
0002039	Ø 16/16/16 mm V4A
0002040	Ø 20/08/20 mm VA
0002034	Ø 20/16/20 mm VA
0008648	Ø 20/16/20 mm VA
0002035	Ø 20/20/20 mm VA
0002014	Ø 20/20 mm / 3/8"
31.20.02.052	Ø 20/30/20 mm VA
0002011	Ø 25/08/25 mm VA
0002041	Ø 25/10/25 mm VA
0002042	Ø 25/16/25 mm VA
0002036	Ø 25/25/25 mm VA
0002046	Ø 25/25 mm / 3/8
0002043	Ø 30/08/30 mm VA
0002044	Ø 30/16/30 mm VA
0002037	Ø 30/30/30 mm V4A
0002047	Ø 30/30 mm / 3/8
0001951	Ø 40/08/40 mm VA
0008646	Ø 40/16/40 mm VA
0008649	Ø 40/40 mm / 3/8
0002045	Ø 50/08/50 mm VA
31.20.02.021	Ø 50/16/50 mm VA
31.20.02.023	Ø 50/25/50 mm VA
31.20.02.014	Ø 60/08/60 mm VA
0008650	Ø 20/20 mm / 1 x M22 x 1,5
0002049	Ø 20/20 mm / 2 x M22 x 1,5
0008651	Ø 25/25 mm / 1 x M22 x 1,5
0002048	Ø 30/30 mm / 1 x M14 x 1,5



T-Stück

Schlauchverbinder T-Stücke

Messing

Material: Messing

T-Stücke	
Artikel-Nr.	Spezifikation
0001952	Ø 25 mm / M14 x 1,5 / 25 mm
0002008	Ø 20 mm / M14 x 1,5 / 20 mm

Threaded fitting

Material: stainless steel

Threaded fitting	
0002615	1/4" internal thread x 1/4" internal thread
0002617	1/2" internal thread x 1/2" internal thread
0002618	3/4" internal thread x 3/4" internal thread
0002619	1" internal thread x 1" internal thread
0002620	1-1/4" internal thread x 1-1/4" internal thread
0002621	1-1/2" internal thread x 1-1/2" internal thread
0002622	2" internal thread x 2" internal thread
0009579	2 1/2" internal thread x 2 1/2" internal thread



Threaded fitting



Electrical oil change pump
(Figures shows unit with bracket and connecting line)

Oilmaster 12 V oil change pump (without bracket and connecting line)	
0012061	Mini-Puppy 12 VDC continuous current impeller pump

Oilmaster electrical oil change pump

Makes oil changes clean and convenient

The electrical 12 VDC Oilmaster pump can be permanently installed or used as a portable unit. As standard, the cables are fitted with alligator clips and can be connected directly to the ship/vehicle battery. The pump works bi-directionally, i.e., it can suction off the used oil and then feed in fresh oil in the opposite direction.

All Panda gensets are equipped with a connection line on the oil pan for connecting the Oilmaster pump.

It is also possible to supply several engines simultaneously. For this purpose, the suction/pressure connection of the pump can be fitted with as many branches as desired by using a distribution station.

The electric pump of the Oilmaster is self-priming and allows for a delivery head of up to 0.5 mm. The Oilmaster is thus suitable for any engine system and is ideal for yachts and vehicles with gensets where the oil connection is difficult to access.

The Oilmaster facilitates a regular oil change and helps operate the engine with consistently clean and pure engine oil.



Standard Kits 1 to 17
Plus Kits 1 to 29

Servicekits

original parts only

The Fischer Panda service kits are designed for the routine service tasks.

The service tasks described in the genset manual can be performed by the operator unless highlighted differently in the manual. Additional maintenance work must be implemented by specially trained technical personnel or by authorised workshops (Fischer Panda Service Points), only. This applies in particular to valve adjustments, work on the diesel injection system, and to engine repairs.

The Fischer Panda service kits contain only original genset spare parts.

Service Kits Standard

Service Kits Standard 1 to 17



The Fischer Panda service kits contain original genset spare parts. The kits are designed for the routine service tasks.

Service Kits Plus

Service Kits Plus 1 to 29



The Fischer Panda service kits contain original genset spare parts for routine service tasks and all parts for the initial 600 h service intervals.

The Fischer Panda service kits Plus are supplied in a convenient water-proof plastic box.

Standard Service Kits

Standard Service Kits 1 to 17

The Fischer Panda service kits contain original genset spare parts. The kits are designed for the routine service tasks.

Service Kit 1 for Panda marine gensets (PMS)

Service Kit 1	
0000688	Service Kit 1
Contents	Suitable for
1 x fuel filter	■ 4000i
1 x filter element for air filter	■ 5000i
1 x toothed belt (temperature poof)	■ 5000 LPE
1 x impeller kit (with gasket)	■ AGT 4000



Service Kit 1

Service Kit 2 for Panda marine gensets (PMS)

Service Kit 2	
0000689	Service Kit 2
Contents	Suitable for
1 x fuel filter	■ 4200
1 x filter element for air filter	■ 4,5
1 x toothed belt (temperature proof)	■ 4500 FCB
1 x impeller kit (with gasket)	■ 4500 SCB
	■ 4500 SCE



Service Kit 2

for more details also see reference table for servicekits in the appendix

Service Kit 3 for Panda marine gensets (PMS)

Service Kit 3

0006353

Service Kit 3

Contents

1 x oil filter
 1 x fuel filter
 1 x filter element for air filter
 1 x toothed belt (temperature proof)
 1 x impeller kit (with gasket)

Suitable for

■ 6000 / 6000i
 ■ 8000 / 8000i
 ■ 9000
 ■ AGT5000
 ■ AGT6000



Service Kit 3

Service Kit 4 for Panda marine gensets (PMS)

Service Kit 4

0000690

Service Kit 4

Contents

1 x oil filter
 1 x fuel filter
 1 x filter element for air filter
 1 x toothed belt (temperature proof)
 1 x impeller kit (with gasket)

Suitable for

■ 12.000
 ■ 14.000
 ■ AGT 8.000



Service Kit 4

Service Kit 5 for Panda marine gensets (PMS)

Service Kit 5

0000691

Service Kit 5

Contents

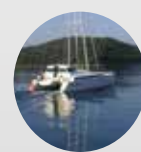
1 x oil filter
 1 x fuel filter
 1 x filter element for air filter
 1 x Tooth-belt (temperature proof)
 1 x Impeller kit (with gasket)

Suitable for

■ 18
 ■ 24
 ■ 30
 ■ 7,5-4
 ■ 9-4
 ■ 12-4



Service Kit 5



Service Kit 6 for Panda vehicle gensets

(PVMV-N, PVM-NE, PVMH, PVK-U, PVK-UK)

Service Kit 6	
0000692	Service Kit 6
Contents	Suitable for
1 x fuel filter	■ 4000i
1 x filter element for air filter	■ 5000i
	■ 5000 LPE
	■ AGT 4000

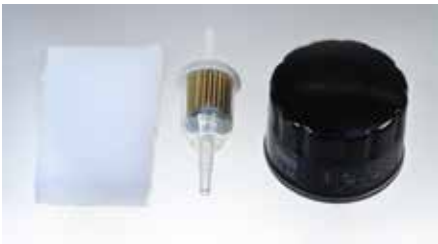


Service Kit 6

Service Kit 7 for Panda vehicle gensets

(PVMV-N, PVM-NE, PVMH, PVK-U, PVK-UK)

Service Kit 7	
0006354	Service Kit 7
Contents	Suitable for
1 x oil filter	■ 4,5
1 x fuel filter	
1 x filter element for fuel filter	



Service Kit 7

Service Kit 8 for Panda vehicle gensets

(PVMV-N, PVM-NE, PVMH, PVK-U, PVK-UK)

Service Kit 8	
0000693	Service Kit 8
Contents	Suitable for
1 x oil filter	■ 6000i ■ 14.000
1 x fuel filter	■ 6000 ■ 15.000
1 x air filter	■ 8000 ■ 15.000i
1 x V-belt (temperature proof)	■ 8000i ■ AGT 5000
	■ 9000 ■ AGT 6000
	■ 12.000 ■ AGT 8000



Service Kit 8

Service Kit 9 for Panda vehicle gensets

(PVMV-N, PVM-NE, PVMH, PVK-U, PVK-UK)

Service Kit 9		
0000694	Service Kit 9	
Contents	Suitable for	
1 x oil filter	■ 18 NE	■ 7.5-4
1 x fuel filter	■ 24 NE	■ 9-4
1 x air filter	■ 30 NE	■ 12-4
1 x V-belt (temperature proof)	(for serial No. E04-011-073 and up)	(for serial No. E04-011-073 and up)



Service Kit 9

Service Kit 10 for Panda vehicle gensets

(PVMV-N, PVM-NE, PVMH, PVK-U, PVK-UK)

Service Kit 10		
0006355	Service Kit 10	
Contents	Suitable for	
1 x oil filter	■ 30 (for serial No. E04-011-074 and up)	
1 x fuel filter	■ 12-4 (for serial No. E04-011-074 and up)	
1 x air filter		
1 x V-belt (temperature proof)		



Service Kit 10

Service Kit 11 for Panda vehicle gensets

(PVMV-N, PVM-NE, PVMH, PVK-U, PVK-UK)

Service Kit 11		
0006378	Service Kit 11	
Contents	Suitable for	
1 x fuel filter	■ 4000s	
1 x filter element for air filter		
1 x impeller kit (with gasket)		



Service Kit 11

Service Kits for larger gensets upon request!



Service Kit 12 for Panda vehicle gensets

(PVMV-N, PVM-NE, PVMH, PVK-U, PVK-UK)

Service Kit 12


21.03.10.047	Service Kit 2	Suitable for
Contents		
1 x fuel filter	Picture similar Service Kit 12	■ 4000 Eco
1 x filter element for air filter		
1 x impeller kit (with gasket)		



Abbildung ähnlich
Service Kit 12

Service Kit 13 for Panda vehicle gensets

(PVMV-N, PVM-NE, PVMH, PVK-U, PVK-UK)

Service Kit 13		
<hr/>		
0006382	Service Kit 13	
<hr/>		
Content		Suitable for
1 x oil filter		 8 „mini“
1 x fuel filter		
1 x filter element for air filter		
1 x toothed belt (temperature-proof)		
1 x impeller kit (with gasket)		





Picture similar

Service Kit 13

Service Kit 14 for Panda vehicle gensets

(PVMV-N, PVM-NE, PVMH, PVK-U, PVK-UK)

Service Kit 14		
0006366	Service Kit 14	
Content	Suitable for	
1 x oil filter		
1 x fuel filter		10.000
1 x filter element for air filter		10.000i
2 x toothed belt (temperature-proof)		
1 x impeller kit (with gasket)		



Picture similar

Service Kit 14

Service Kit 15 for Panda vehicle gensets

(PVMV-N, PVM-NE, PVMH, PVK-U, PVK-UK)

Service Kit 15	
0006367	Service Kit 15
Contents	Suitable for
	■ 10.000
1 x oil filter	
1 x fuel filter	
1 x air filter	
2 x toothed belt (temperature-proof)	



Picture similar

Service Kit 15

Service Kit 16 for Panda vehicle gensets

(PVMV-N, PVM-NE, PVMH, PVK-U, PVK-UK)

Service Kit 16	
0006368	Service Kit 16
Contents	Suitable for
1 x oil filter	■ 10.000i
1 x fuel filter	
1 x air filter	
1 x toothed belt (temperature-proof)	



Picture similar

Service Kit 16

Service Kit 17 for Panda vehicle gensets

(PVMV-N, PVM-NE, PVMH, PVK-U, PVK-UK)

Service Kit 17	
0006369	Service Kit 17
Contents	Suitable for
1 x oil filter	■ 10.000
1 x fuel filter	■ 10.000i
1 x filter element for air filter	
1 x toothed belt (temperature-proof)	
1 x impeller kit (with gasket)	



Picture similar

Service Kit 17



Service Kits Plus

The Fischer Panda service kits contain original genset spare parts for routine service tasks and all parts for the initial 600 h service intervals. The Fischer Panda Plus service kits are supplied in a convenient water-proof plastic box.

Service Kit Plus 1 for Panda marine gensets (PMS)

Service Kit Plus 1	
0006356	Service Kit Plus 1
Contents	
4 x fuel filter	Suitable for
4 x Filter element for air filter	
4 x Tooth-belt (temperature-proof)	■ 4000i
2 x Impeller kit (with gasket)	■ 5000i
1 x service kit	
2 x valve cover gasket	
3 x fuse straps	
1 x plastic bag, white	



Service Kit Plus 1

Service Kit Plus 2 for Panda marine gensets (PMS)

Service Kit Plus 2	
0006357	Service Kit Plus 2
Contents	
4x fuel filter	Suitable for
4x filter element for air filter	
4x toothed belt (temperature-proof)	■ 4200
2x impeller kit (with gasket)	■ 4,5
1x service kit	■ 4500 SCB
2x valve cover gasket	■ 4500 FCB
3x flat car fuse 25A	
3x car relay	
1x plastic bag, white	



Service Kit Plus 2

Service Kit 3 for Panda marine gensets (PMS)

Service Kit Plus 3	
0006358	Service Kit Plus 3

Contents	Suitable for
4x fuel filter	■ 5000 LPE
4x filter element for air filter	■ AGT 4000
4x toothed belt (temperature-proof)	
2x impeller kit (with gasket)	
1x service Kit	
2x valve cover gasket	
3x flat car fuse 14 A	
3x flat car fuse 25A	
3x car relay	
1x plastic bag, white	



Service Kit Plus 3

Service Kit 4 for Panda marine gensets (PMS)

Service Kit Plus 4	
0006359	Service Kit Plus 4

Contents	Suitable for
5 x oil filter	up to serial No. C02-034-061
4 x fuel filter (in metal case)	■ 6000
4 x filter element for air filter	■ 8000
4 x V-belt (temperature-proof)	■ AGT 5000
2 x impeller kit (with gasket)	■ AGT 6000
1 x service kit	
2 x valve cover gasket	
3x flat car fuse 14 A	
3x flat car fuse 25A	
3x car relay	
1x plastic bag, white	



Service Kit Plus 4



Service Kit Plus 5 for Panda marine gensets (PMS)

Service Kit Plus 5	
0006360	Service Kit Plus 5
Contents	Suitable for
5 x oil filter	up to serial No. C02-034-062
4 x fuel filter (in metal case)	■ 6000i
4 x filter element for air filter	■ 6000
4 x V-belt (temperature-proof)	■ 8000i
2 x impeller kit (with gasket)	■ 8000
1 x service kit	■ AGT 5000
2 x valve cover gasket	■ AGT 6000
3x flat car fuse 14 A	
3x flat car fuse 25A	
3x car relay	
1x plastic bag, white	



Service Kit Plus 5

Service Kit Plus 6 for Panda marine gensets (PMS)

Service Kit Plus 6	
0006361	Service Kit Plus 6
Contents	Suitable for
5 x oil filter	up to serial No. C04-025-094
4 x fuel filter (in metal case)	■ 9000
4 x filter element for air filter	■ 12000
4 x V-belt (temperature-proof)	■ 14000
2 x impeller kit (with gasket)	■ AGT 8000
1 x service kit	
2 x valve cover gasket	
3x flat car fuse 14 A	
3x flat car fuse 25A	
3x car relay	
1x plastic bag, white	



Service Kit Plus 6

Service Kit Plus 7 for Panda marine gensets (PMS)

Service Kit Plus 7

0000695

Service Kit Plus 7

Content

5 x oil filter
 4 x fuel filter (in metal case)
 4 x filter element for air filter
 4 x V-belt (temperature-proof)
 2 x impeller kit (with gasket)
 1 x service kit
 2 x valve cover gasket
 3x flat car fuse 14 A
 3x flat car fuse 25A
 3x car relay
 1x plastic bag, white

Suitable for

up to serial No. C04-025-095

- 9000
- 12000
- 14000
- AGT 8000



Service Kit Plus 7

Service Kit Plus 8 for Panda marine gensets (PMS)

Service Kit Plus 8

0006362

Service Kit Plus 8

Contents

5 x oil filter
 4 x fuel filter (in metal case)
 4 x filter element for air filter
 4 x V-belt (temperature-proof)
 2 x impeller kit (with gasket)
 1 x impeller pump
 2 x valve cover gasket
 3 x flat car fuse 14 A
 3 x flat car fuse 25 A
 3 x car relay
 1 x plastic bag, white

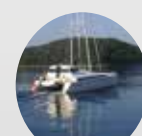
Suitable for

up to serial No. C04-025-095

- 18
- 7,5-4
- 9-4



Service Kit Plus 8



Service Kit Plus 9 for Panda vehicle gensets

(PVMV-N, PVM-NE, PVMH, PVK-U, PVK-UK)

Service Kit Plus 9	
0000696	Service Kit Plus 9
Contents	Suitable for
4 x fuel filter	■ 4000i
4 x Filter element for air filter	■ 5000i
2 x valve cover gasket	
3 x fuse straps	
1 x plastic bag, white	



Service Kit Plus 9

Service Kit Plus 10 for Panda vehicle gensets

(PVMV-N, PVM-NE, PVMH, PVK-U, PVK-UK)

Service Kit Plus 13	
0006365	Service Kit Plus 13
Contents	Suitable for
5 x oil filter	■ 4,5
4 x fuel filter	
4 x Filter element for air filter	
2 x valve cover gasket	
3 x flat car fuse 25 A	
3 x car relay	
1 x plastic bag, white	



Service Kit Plus 10

Service Kit Plus 11 for Panda vehicle gensets

(PVMV-N, PVM-NE, PVMH, PVK-U, PVK-UK)

Service Kit Plus 11	
0000697	Service Kit Plus 11
Contents	Suitable for
4 x fuel filter	■ 5000 LPE
4 x Filter element for air filter	■ AGT 4000
2 x valve cover gasket	
3 x flat car fuse 15 A	
3 x flat car fuse 25 A	
3 x car relay	
1 x plastic bag, white	



Service Kit Plus 11

Service Kit Plus 12 for Panda vehicle gensets

(PVMV-N, PVM-NE, PVMH, PVK-U, PVK-UK)

Service Kit Plus 12

0006364

Service Kit Plus 12

Contents

5 x oil filter
4 x fuel filter (in metal case)
4 x air filter
4 x V-belt (temperature-proof)
2 x valve cover gasket
3 x flat car fuse 15 A
3 x flat car fuse 25 A
3 x car relay
1 x plastic bag, white

Suitable for

up to serial No. C02-034-061

- 6000
- 8000
- AGT 5000
- AGT 6000



Service Kit Plus 12

Service Kit Plus 13 for Panda vehicle gensets

(PVMV-N, PVM-NE, PVMH, PVK-U, PVK-UK)

Service Kit Plus 10

0006363

Service Kit Plus 10

Contents

5 x oil filter
4 x fuel filter (in metal case)
4 x air filter
4 x V-belt (temperature-proof)
2 x valve cover gasket
3 x flat car fuse 15 A
3 x flat car fuse 25 A
3 x car relay
1 x plastic bag, white

Suitable for

up to serial No. C02-034-062

- 6000
- 8000
- AGT 5000
- AGT 6000



Service Kit Plus 13



Service Kit Plus 14 for Panda vehicle gensets

(PVMV-N, PVM-NE, PVMH, PVK-U, PVK-UK)

Service Kit Plus 14	
0006366	Service Kit Plus 14

Contents	Suitable for
5 x oil filter 4 x fuel filter (in metal case) 4 x air filter 4 x V-belt (temperature-proof) 2 x valve cover gasket 3 x flat car fuse 15 A 3 x flat car fuse 25 A 3 x car relay 1 x plastic bag, white	up to serial No. C02-034-062 ■ 9000 ■ 12000 ■ 14000 ■ AGT 8000



Service Kit Plus 14

Service Kit Plus 15 for Panda vehicle gensets

(PVMV-N, PVM-NE, PVMH, PVK-U, PVK-UK)

Service Kit Plus 15	
0006367	Service Kit Plus 15

Contents	Suitable for
5 x oil filter 4 x fuel filter (in metal case) 4 x air filter 4 x V-belt (temperture-proof) 2 x valve cover gasket 3 x flat car fuse 15 A 3 x flat car fuse 25 A 3 x car relay 1 x plastic bag, white	up to serial No. C04-025-095 ■ 9000 ■ 12000 ■ 14000 ■ AGT 8000



Service Kit Plus 15

Service Kit Plus 16 for Panda vehicle gensets

(PVMV-N, PVM-NE, PVMH, PVK-U, PVK-UK)

Service Kit Plus 16

0006368

Service Kit Plus 16

Contents

Suitable for

5 x oil filter
 4 x fuel filter (in metal case)
 4 x air filter
 4 x V-belt (temperature-proof)
 2 x valve cover gasket
 3 x flat car fuse 15 A
 3 x flat car fuse 25 A
 3 x car relay
 1 x plastic bag, white

■ 18
 ■ 7,5-4
 ■ 9-4



Service Kit Plus 16

Service Kit Plus 17 for Panda vehicle gensets

(PVMV-N, PVM-NE, PVMH, PVK-U, PVK-UK)

Service Kit Plus 17

0006369

Service Kit Plus 17

Contents

Suitable for

5 x oil filter
 4 x fuel filter (in metal case)
 4 x air filter
 4 x V-belt (temperature-proof)
 2 x valve cover gasket
 3 x flat car fuse 15 A
 3 x flat car fuse 25 A
 3 x car relay
 1 x plastic bag, white

up to serial No. E04-011-073
 ■ 24
 ■ 30
 ■ 12-4



Service Kit Plus 17



Service Kit Plus 18 for Panda vehicle gensets

(PVMV-N, PVM-NE, PVMH, PVK-U, PVK-UK)

Service Kit Plus 18

0006370

Service Kit Plus 18

Contents

5 x oil filter
4 x fuel filter (in metal case)
4 x air filter
4 x V-belt (temperature-proof)
2 x valve cover gasket
3 x flat car fuse 15 A
3 x flat car fuse 25 A
3 x car relay
1 x plastic bag, white

Suitable for

up to serial No. E04-011-074

- 30
- 12-4



Service Kit Plus 18

Service Kit Plus 19 for Panda vehicle gensets

(PVMV-N, PVM-NE, PVMH, PVK-U, PVK-UK)

Service Kit Plus 19

0006371

Service Kit Plus 19

Contents

5 x oil filter
4 x fuel filter (in metal case)
4 x air filter
4 x V-belt (temperature-proof)
2 x valve cover gasket
3 x flat car fuse 15 A
3 x flat car fuse 25 A
3 x car relay
1 x plastic bag, white

Suitable for

up to serial No. E04-011-074

- 24
- 30
- 12-4



Service Kit Plus 19

Service Kit Plus 20 for Panda marine gensets (PMS)

Service Kit Plus 20	
0006380	Service Kit Plus 20

Contents	Suitable for
4 x fuel filter 4 x filter element for fuel filter 2 x impeller kit (with gasket) 1 x service kit 2 x valve cover gasket 3 x flat car fuse 15 A 3 x car relay 1 x plastic bag, white	up to serial No. E04-011-074 ■ 4000s



picture similar
Service Kit Plus 20

Service Kit Plus 21 for Panda marine gensets (PMS)

Service Kit Plus 21	
0006381	Service Kit Plus 21

Contents	Suitable for
4 x fuel filter 4 x filter element for fuel filter 2 x impeller kit (with gasket) 1 x service kit 2 x valve cover gasket 3 x flat car fuse 15 A 3 x car relay 1 x plastic bag, white	 ■ 4000 Eco



picture similar
Service Kit Plus 21



Service Kit Plus 22 for Panda vehicle gensets

(PVMV-N, PVM-NE, PVMH, PVK-U, PVK-UK)

Service Kit Plus 22

21.03.10.050P

Service Kit Plus 22

Contents

5 x oil filter
 4 x filter element for fuel filter
 4 x filter element for air filter
 4 x V-belt (heat-proof)
 2 x impeller kit (with gasket)
 1 x service kit
 2 x valve cover gasket
 3 x flat car fuse 15 A
 3 x flat car fuse 25 A
 3 x car relay
 1 x plastic bag, white

Suitable for

up to serial No. C02-034-061

■ 8 „mini“



picture similar

Service Kit Plus 22

Service Kit Plus 23 for Panda vehicle gensets

(PVMV-N, PVM-NE, PVMH, PVK-U, PVK-UK)

Service Kit Plus 23

21.03.10.051P

Service Kit Plus 23

Contents

5 x oil filter
 4 x filter element for fuel filter
 4 x filter element for air filter
 4 x V-belt (heat-proof)
 2 x impeller kit (with gasket)
 1 x service kit
 2 x valve cover gasket
 3 x flat car fuse 15 A
 3 x flat car fuse 25 A
 3 x car relay
 1 x plastic bag, white

Suitable for

up to serial No. C02-034-062

■ 8 „mini“



picture similar

Service Kit Plus 23

Service Kit Plus 24 for Panda vehicle gensets

(PVMV-N, PVM-NE, PVMH, PVK-U, PVK-UK)

Service Kit Plus 24

0006384

Service Kit Plus 24

Contents

5 x oil filter
 4 x filter element for fuel filter
 4 x filter element for air filter
 4 x V-belt (heat-proof)
 2 x impeller kit (with gasket)
 1 x service kit
 2 x valve cover gasket
 3 x flat car fuse 15 A
 3 x flat car fuse 25 A
 3 x car relay
 1 x plastic bag, white

Suitable for

■ 10.000



picture similar

Service Kit Plus 24

Service Kit Plus 25 for Panda marine gensets

Service Kit Plus 25

0000702

Service Kit Plus 25

Contents

5 x oil filter
 4 x filter element for fuel filter
 4 x filter element for air filter
 4 x V-belt (heat-proof)
 2 x impeller kit (with gasket)
 1 x service Kit
 2 x valve cover gasket
 3 x car relay
 1 x plastic bag, white

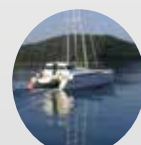
Suitable for

■ 10.000i



picture similar

Service Kit Plus 25



Service Kit Plus 26 for Panda vehicle gensets

(PVMV-N, PVM-NE, PVMH, PVK-U, PVK-UK)

Service Kit Plus 26	
0006387	Service Kit Plus 26
Content	Suitable for
5 x oil filter	■ 10.000
4 x filter element for fuel filter	
4 x filter element for air filter	
4 x V-belt (heat-proof)	
2 x valve cover gasket	
3 x flat car fuse 15 A	
3 x flat car fuse 25 A	
3 x car relay	
1 x plastic bag, white	



picture similar

Service Kit Plus 26

Service Kit Plus 27 for Panda vehicle gensets

(PVMV-N, PVM-NE, PVMH, PVK-U, PVK-UK)

Service Kit Plus 27	
21.03.10.061P	Service Kit Plus 27
Content	Suitable for
5 x oil filter	■ 10.000i
4 x filter element for fuel filter	
4 x V-belt (heat-proof)	
2 x valve cover gasket	
3 x car relay	
1 x plastic bag, white	



picture similar

Service Kit Plus 27

Service Kit Plus 28 for Panda marine gensets

Service Kit Plus 28

21.03.10.053P

Service Kit Plus 28

Content

5 x oil filter
 4 x filter element for fuel filter
 4 x filter element for air filter
 4 x V-belt (heat-proof)
 2x impeller kit (with gasket)
 1 x Service Kit
 2 x valve cover gasket
 3 x flat car fuse 15 A
 3 x flat car fuse 25 A
 3 x car relay
 1 x plastic bag, white

Suitable for

up to serial No. C04-025-094

■ 12 „mini“



picture similar

Service Kit Plus 28

Service Kit Plus 29 for Panda marine gensets

Service Kit Plus 29

21.03.10.054P

Service Kit Plus 29

Content

5 x oil filter
 4 x filter element for fuel filter
 4 x filter element for air filter
 4 x V-belt (heat-proof)
 2x impeller kit (with gasket)
 1 x Service Kit
 2 x valve cover gasket
 3 x flat car fuse 15 A
 3 x flat car fuse 25 A
 3 x car relay
 1 x plastic bag, white

Suitable for

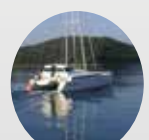
up to serial No. C04-025-095

■ 12 „mini“



picture similar

Service Kit Plus 29



Reference table for service and installation

Panda marine AC gensets (PMS)

Genertor type	Service Kit	Plus service kit	Installation kit Basic	Installation kit Premium	Shock-mount, captive (4 pieces required)	Shock-mount, non-captive (4 pieces required)
<i>i-Serie with variable R.P.M.</i>						
4800i PMS	0000700	0006379	0000677	0000674	0000681 (4 Stck./4 pcs.)	0009669
5000i Neo PMS	0015691	0023529	0000677	0000674	0002750	0009669
5000i PMS	Service Kit 1 0000688	Service Kit Plus 1 0006356	0000677	0000674	0002750	0009669
8000i PMS	Service Kit 3 0006353	Service Kit Plus 5 0006360	0000677	0000674	0002750	0009675
10000i PMS	Service Kit 10000i 0006383	Service Kit Plus 25 0000702	0000677	0000674	0002752	0009675
15000i PMS	0000703	0000699	0000677	0000674	0002752	0009675
25i PMS	Service Kit 5 0000691	Service Kit Plus 19 0006371	0000673	0000676	0002753	-
45i PMS	0006388	0006397	0006291	0006296	32.20.01.008	-
60i PMS	0006399	0006398	0023179	0023180	0002757	-
<i>3000 bzw. 3600 R.P.M.</i>						
4000s PMS	Service Kit 4000s 0006378	Service Kit Plus 20 0006380	0000677	0000674	0000681 (4 Stck./4 pcs.)	0009669
4000s Neo PMS	0015691	0023529	0000677	0000674	0006309 (4 Stck./4 pcs.)	0009669
4000 Eco PMS	Service Kit 12 21.03.10.047	Service Kit Plus 21 0006381	0000677	0000674	0002750	0009669
4K	Service Kit 0004662	Service Kit Plus 2 0006357	0000677	0000674	0002750	0009669
5000 LPE PMS	Service Kit 1 0000688	Service Kit Plus 3 0006358	0000677	0000674	0002750	0009669
6000 PMS SNo ≤ C02-034-061	Service Kit 3 0006353	Service Kit Plus 4 0006359	0000677	0000674	0002752	0009675
6000 PMS SNo ≥ C02-034-062	Service Kit 3 0006353	Service Kit Plus 5 0006360	0000677	0000674	0002752	0009675
6500 PMS	Service Kit 13 0006382	Service Kit Plus 23 0026242	0000677	0000674	0002752	0009675
7 mini	Service Kit 3 0006353	Service Kit Plus 4 0006359	0000677	0000674	0002752	0009675
8 mini PMS SNo ≤ C02-034-061	Service Kit 13 0006382	Service Kit Plus 22 0026242	0000677	0000674	0002752	0009675
8 mini PMS SNo ≥ C02-034-062	Service Kit 13 0006382	Service Kit Plus 23 0026242	0000677	0000674	0002752	0009675
8000 PMS SNo ≤ C02-034-061	Service Kit 3 0006353	Service Kit Plus 4 0006359	0000677	0000674	0002752	0009675
8000 PMS SNo ≥ C02-034-062	Service Kit 3 0006353	Service Kit Plus 5 0006360	0000677	0000674	0002752	0009675
8000x PMS	Service Kit 3 0006353	on request	0000677	0000674	0002752	0009675

Genertor type	Service Kit	Plus service kit	Installation kit Basic	Installation kit Premium	Shock-mount, captive (4 pieces required)	Shock-mount, non- captive (4 pieces required)
9000 PMS SNo ≤ C04-025-094	Service Kit 3 0006353	Service Kit Plus 6 0006361	0000677	0000674	0002752	0009675
9000 PMS SNo ≥ C04-025-095	Service Kit 3 0006353	Service Kit Plus 7 0000695	0000677	0000674	0002752	0009675
10000 PMS	Service Kit 10000 0006383	Service Kit Plus 24 0006384	0000677	0000674	0002752	0009675
10000x PMS	Service Kit 10000 0006383	upon request	0000677	0000674	0002752	0009675
12 mini PMS SNo ≥ C04-025-095	Service Kit 17 0000701	Service Kit Plus 29 0026244	0000677	0000674	0002752	0009675
12000 PMS SNo ≤ C04-025-094	Service Kit 4 0000690	Service Kit Plus 6 0006361	0000677	0000674	0002752	0009675
12000 PMS SNo ≥ C04-025-095	Service Kit 4 0000690	Service Kit Plus 7 0000695	0000677	0000674	0002752	0009675
12000x PMS	Service Kit 4 0000690	upon request	0000677	0000674	0002752	0009675
14000 PMS SNo ≤ C05-014-005	Service Kit 4 0000690	Service Kit Plus 6 0006361	0000677	0000674	0002753	0009675
14000 PMS SNo ≥ C05-014-006	Service Kit 4 0000690	Service Kit Plus 7 0000695	0000677	0000674	0002753	0009675
15000 PMS	Service Kit 0000704	Service Kit 0000699	0000677	0000674	0002753	0009675
15000x PMS	Service Kit 0000704	upon request	0000677	0000674	0002753	0009675
18 PMS	Service Kit 5 0000691	Service Kit Plus 8 0006362	0000673	0000676	0002753	-
24 PMS	Service Kit 5 0000691	Service Kit Plus 19 0006371	0000673	0000676	0002754	-
30 PMS	Service Kit 5 0000691	Service Kit Plus 19 0006371	006273	0006274	0002754	-
30 IC PMS	Service Kit 5 0000691	Service Kit Plus 19 0006371	0006273	0006274	0002754	-
45 PMS	upon request	upon request	0006291	0006296	0002756	-
9-4 PMS	Service Kit 5 0000691	Service Kit Plus 8 0006362	0000673	0000674	0002753	-
12-4 PMS	Service Kit 5 0000691	Service Kit Plus 19 0006371	0000673	0000674	0002753	-
17-4 PMS	upon request	upon request	0000673	0006274	0002756	-
22-4 PMS	upon request	upon request	0006291	0006296	0002756	-
30-4 PMS	upon request	upon request	0006291	0006296	0002756	-
40-4 PMS	upon request	upon request	0006291	0006296	0002756	-
50-4 PMS	upon request	upon request	0006304	0006305	0002756	-
60-4 PMS	upon request	upon request	0024649	0006277	0002756	-
70-4 PMS	upon request	upon request	upon request	upon request	upon request	-
85-4 PMS	upon request	upon request	upon request	upon request	upon request	-

Panda marine gensets AGT (PMS)

Genertor type	Service Kit	Plus service kit	Installation kit Basic	Installation kit Premium	Shock-mount, captive (4 pieces required)	Shock-mount, non-captive (4 pieces required)
AGT 4000-12V PMS	Service Kit 1 0000688	Service Kit Plus 3 0006358	0000677	0000674	0002750	0009669
AGT 4000-24V PMS	Service Kit 1 0000688	Service Kit Plus 3 0006358	0000677	0000674	0002750	0009669
AGT 5000-12V PMS SNo ≤ C02-034-061	Service Kit 3 0006353	Service Kit Plus 4 0006359	0000677	0000674	0002750	0009675
AGT 5000-12V PMS SNo ≥ C02-034-062	Service Kit 3 0006353	Service Kit Plus 5 0006360	0000677	0000674	0002750	0009675
AGT 6000-24V PMS SNo ≤ C02-034-061	Service Kit 3 0006353	Service Kit Plus 4 0006359	0000677	0000674	0002752	0009675
AGT 6000-24V PMS SNo ≥ C02-034-062	Service Kit 3 0006353	Service Kit Plus 5 0006360	0000677	0000674	0002752	0009675
AGT 8000-24V PMS SNo ≤ C04-025-094	Service Kit 4 0000690	Service Kit Plus 6 0006361	0000677	0000674	0002752	0009675
AGT 8000-24V PMS SNo ≥ C04-025-095	Service Kit 4 0000690	Service Kit Plus 7 0000695	0000677	0000674	0002752	0009675
AGT 10000-48V PMS	upon request	upon request	0000677	0000674	0002752	0009675
AGT 11000-48V PMS	upon request	upon request	0000677	0000674	0002752	0009675
AGT 13000 PMS	upon request	upon request	0006300	0006301	0002753	-
AGT 15000 PMS	upon request	upon request	0006300	0006301	0002753	-
AGT 18000 PMS	upon request	upon request	0006300	0006301	0002753	0009675
AGT 2200 PMS	upon request	upon request	0006273	0006274	0002754	-
Panda PV 12 „mini“	upon request	upon request			upon request	
Panda PV 14000 NE SNo ≤ C05-014-005	Service Kit 8 0000693	Service Kit Plus 14 0006366			0002753	
Panda PV 14000 NE SNo ≥ C05-014-006	Service Kit 8 0000693	Service Kit Plus 15 0006367			0002753	
Panda PV 15000	Service Kit 8 0000693	upon request			0002754	

Panda vehicle AC gensets (PVMV-N, PVM-NE, PVMH, PVK-U, PVK-UK)

Genertor type	Service Kit	Plus service kit	Shock-mount, captive (4 pieces required)
i-series with variable r.p.m.			
4000i PV*	Service Kit 6 0000692	Service Kit Plus 9 0000696	0002752
5000i PV*	Service Kit 6 0000692	Service Kit Plus 9 0000696	0002752
6000i PV*	Service Kit 8 0000693	Service Kit Plus 13 0006365	0002752
8000i PV*	Service Kit 8 0000693	Service Kit Plus 13 0006365	0002752
10000i PV*	Service Kit 16 0006386	Service Kit Plus 27 0026191	0002753
15000i PV*	Service Kit 8 0000693	Service Kit Plus 0006393	0002752
3000 / 3600 r.p.m.			
4,5 PV*	Service Kit 7 0006354	Service Kit Plus 10 0006363	0002753
5000 LPE PV*	Service Kit 6 0000692	Service Kit Plus 11 0000697	0002752
6000 PV* SNo ≤ C02-034-061	Service Kit 8 0000693	Service Kit Plus 12 0006364	0002752
6000 PV* SNo ≥ C02-034-062	Service Kit 8 0000693	Service Kit Plus 13 0006365	0002752
8000 PV* SNo ≤ C02-034-061	Service Kit 8 0000693	Service Kit Plus 12 0006364	0002752
8000 PV* SNo ≥ C02-034-062	Service Kit 8 0000693	Service Kit Plus 13 0006365	0002752
8 „mini“ PV*	Anfrage / request	Anfrage / request	0002752
9000 PV* SNo ≤ C04-025-094	Service Kit 8 0000693	Service Kit Plus 14 0006366	0002753
9000 PV* SNo ≥ C04-025-095	Service Kit 8 0000693	Service Kit Plus 15 0006367	0002753
10000 PV*	Service Kit 15 0006385	Service Kit Plus 26 0006387	0002753
12000 PV* SNo ≤ C04-025-094	Service Kit 8 0000693	Service Kit Plus 14 0006366	0002753
12000 NE PV* SNo ≥ C04-025-095	Service Kit 8 0000693	Service Kit Plus 15 0006367	0002753
12 „mini“ PV*	Anfrage / request	Anfrage / request	0002753
14000 NE PV* SNo ≤ C05-014-005	Service Kit 8 0000693	Service Kit Plus 14 0006366	0002753
14000 NE PV* SNo ≥ C05-014-006	Service Kit 8 0000693	Service Kit Plus 15 0006367	0002753
15000 PV*	Service Kit 8 0000693	Service Kit Plus 0006392	0002754
18 PV*	Service Kit 9 0000694	Service Kit Plus 16 0006368	0002754
24 PV*	Service Kit 9 0000694	Service Kit Plus 17 0006369	0002754
30 PV* SNo ≤ E04-011-073	Service Kit 9 0000694	Service Kit Plus 17 0006369	0002754
30 PV* SNo ≥ E04-011-074	Service Kit 10 0006355	Service Kit Plus 18 0006370	0002754

Panda vehicle AC gensets

(PVMV-N, PVM-NE, PVMH, PVK-U, PVK-UK)

Generator type	Service Kit	Plus service kit	Shock-mount, captive (4 pieces required)
35 PV*	upon request	upon request	0002754
40 PV*	upon request	upon request	0002757
47 PV*	upon request	upon request	0002756
60 PV*	upon request	upon request	0002756
75 PV*	upon request	upon request	0002756
100 PV*	upon request	upon request	0002757
1500 / 1800 UpM			
7,5-4 PV*	Service Kit 9 0000694	Service Kit Plus 16 0006368	0002752
9-4 PV*	Service Kit 9 0000694	Service Kit Plus 16 0006368	0002753
12-4 PV* SNo ≤ E04-011-073	Service Kit 9 0000694	Service Kit Plus 17 0006369	0002753
12-4 PV* SNo ≥ E04-011-074	Service Kit 10 0006355	Service Kit Plus 18 0006370	0002753
17-4 PV*	upon request	upon request	0002756
22-4 PV*	upon request	upon request	0002756
30-4 PV*	upon request	upon request	0002754
40-4 PV*	upon request	upon request	0002756
50-4 PV*	upon request	upon request	0002756
60-4 PV*	upon request	upon request	0002756
70-4 PV*	upon request	upon request	0002759
85-4 PV*	upon request	upon request	0002759
110-4 PV*	upon request	upon request	0009647
130-4 PV*	upon request	upon request	0009647

Panda vehicle gensets AGT (PVMV-N, PVM-NE, PVMH, PVK-U, PVK-UK)

Generator type	Service Kit	Plus service kit	Shock-mount, captive (4 pieces required)
AGT 4000-12V PV*	Service Kit 6 0000692	Service Kit Plus 11 0000697	0002750
AGT 4000-24V PV*	Service Kit 6 0000692	Service Kit Plus 11 0000697	0002750
AGT 5000-12V PV* SNo \geq C02-034-061	Service Kit 8 0000693	Service Kit Plus 12 0006364	0002753
AGT 5000-12V PV* SNo \geq C02-034-062	Service Kit 8 0000693	Service Kit Plus 13 0006365	0002753
AGT 6000-24V PV* SNo \leq C02-034-061	Service Kit 8 0000693	Service Kit Plus 12 0006364	0002753
AGT 6000-24V PV* SNo \geq C02-034-062	Service Kit 8 0000693	Service Kit Plus 13 0006365	0002753
AGT 8000-24V PV* SNo \leq C04-025-094	Service Kit 8 0000693	Service Kit Plus 14 0006366	0002753
AGT 8000-24V PV* SNo \geq C04-025-095	Service Kit 8 0000693	Service Kit Plus 15 0006367	0002753
AGT 12000 PV*	upon request	upon request	0002753
AGT 14000 PV*	upon request	upon request	0002754
AGT 16000 PV*	upon request	upon request	0002754
AGT 25000 PV*	upon request	upon request	upon request

Hose diameter

Cooling water hose, exhaust hose, fuel hose

Panda marine AC gensets (PMS)

Generator-Modell / Generator model	Ø Seewasserleitung / Seawater hose [mm]	Ø Abgasleitung / Exhaust hose [mm]	Ø Kraftstoffleitung / Fuel hose [mm]	
			Vorlauf / Feed [mm]	Rücklauf (Lecköl) / Return (bleed) [mm]
<i>i-Serie mit variabler Drehzahl / with variable speed</i>				
Panda 4800i	20	40	8	8
Panda 5000i	20	40	8	8
Panda 8000i	20	40	8	8
Panda 10000i	20	40	8	8
Panda 15000i	20	40	8	8
Panda 25i	25	50	8	8
Panda 45i	30	60	8	8
Panda 65i	30	76	8	8
Panda 150i	30	76	8	8
<i>mit mini-VCS Spannungsregelung / with mini VCS voltage regulation</i>				
Panda 4 Mini	20	40	8	8
Panda 7 Mini	20	40	8	8
Panda 9 Mini	20	40	8	8
Panda 12 Mini	20	40	8	8
Panda 15 Mini	20	40	8	8
<i>Drehzahl 3000 bzw. 3600 UpM / speed 3000 resp. 3600 rpm</i>				
Panda 4000s FC	20	40	8	8
Panda 4200 FC	20	40	1/4" NPT	1/4" NPT
Panda 4500 SCB	12	30	8	8
Panda 6000	20	40	8	8
Panda 8000	20	40	8	8
Panda 9000	20	40	8	8
Panda 10000	20	40	8	8
Panda 12000	20	40	8	8
Panda 14000	20	40	8	8
Panda 15000	20	40	8	8
Panda 18	25	50	8	8
Panda 24	25	50	8	8
Panda 30	25	60	8	8
Panda 30 IC	25	60	8	8
Panda 45	30	60	8	8
Panda 65	30	76	8	8

Generator-Modell / Generator model	Ø Seewasserleitung / Seawater hose [mm]	Ø Abgasleitung / Exhaust hose [mm]	Ø Kraftstoffleitung / Fuel hose [mm]	
			Vorlauf / Feed [mm]	Rücklauf (Lecköl) / Return (bleed) [mm]
Drehzahl 1500 / 1800 UpM / speed 1500 resp. 1800 rpm				
Panda 7,5-4	20	40	8	8
Panda 09-4	20	50	8	8
Panda 12-4	20	50	8	8
Panda 17-4	25	60	8	8
Panda 22-4	30	60	8	8
Panda 30-4	30	60	8	8
Panda 40-4	30	60	8	8
Panda 60-4 DZ	30	60	8	8
Panda 70-4 DZ	40	76	8	8
Panda 85-4 DZ	40	76	8	8
Panda 110-4 DZ	50	76	8	8
Panda 130-4 DZ	50	76	8	8

Panda Marine Gleichstrom-Generatoren (AGT)

Generator Typ / Type	Ø Seewasserleitung / Seawater hose [mm]	Ø Abgasleitung / Exhaust hose [mm]	Ø Kraftstoffleitung / Fuel hose [mm]	
			Vorlauf / Feed [mm]	Rücklauf (Lecköl) / Return (bleed) [mm]
Panda AGT 4000-12V	20	40	8	8
Panda AGT 4000-24V	20	40	8	8
Panda AGT 5000-12V	20	40	8	8
Panda AGT 6000-24V	20	40	8	8
Panda AGT 8000-24V	20	40	8	8
Panda AGT 10000-48V	20	40	8	8
Panda AGT 11000-48V	20	40	8	8
Panda AGT 13000	20	50	8	8
Panda AGT 15000	20	50	8	8
Panda AGT 18000	20	50	8	8
Panda AGT 22000	25	60	8	8
Panda AGT 25000	30	60	8	8
Panda AGT 30000	40	60	8	8
Panda AGT 36000	40	60	8	8

Notes: Certain gensets listed in the table are no longer being manufactured.

Panda vehicle AC gensets

(PVMV-N, PVM-NE, PVM-H PVK-U, PVK-UK)

Generator-Modell / Generator model	Ø Kühlwasserleitung / Cooling water hose [mm]	Ø Abgasleitung / Exhaust hose [mm]	Ø Kraftstoffleitung / Fuel hose [mm]	
			Zulauf / Feed	Rücklauf / Return
<i>i-Generatoren mit variabler Drehzahl / i-series gensets with variable speed</i>				
Panda 5000i	20	40	8	8
Panda 8000i / 10000i	25	40	8	8
Panda 15000i	25	40	8	8
Panda 25i	30	40	8	8
Panda 45i	30	50	8	8
<i>Drehzahl 3000 bzw. 3600 UpM / rpm</i>				
Panda 4,5 ND	20	40	8	8
Panda 8000	25	40	8	8
Panda 8 mini	25	40	8	8
Panda 9000	25	40	8	8
Panda 10000	25	40	8	8
Panda 10 mini	25	40	8	8
Panda 12000	25	40	8	8
Panda 12 mini	25	40	8	8
Panda 15000	25	40	8	8
Panda 18	25	40	8	8
Panda 24	25	40	8	8
Panda 30	25	40	8	8
Panda 60	50	60	8	8
Panda 75	50	76	8	8
Panda 100	60	76	8	8
<i>Drehzahl 1500 bzw. 1800 UpM / rpm</i>				
Panda 7,5-4	25	40	8	8
Panda 9-4	25	40	8	8
Panda 12-4	25	40	8	8
Panda 17-4	30	40	8	8
Panda 22-4	30	40	8	8
Panda 30-4	40	50	8	8

Panda 40-4	40	50	8	8
Panda 50-4	40	60	8	8
Panda 60-4	50	60	8	8
Panda 70-4	50	76	8	8
Panda 85-4	50	76	8	8
Panda 110-4	50	76	8	8
Panda 130-4	50	76	8	8
Panda 200-4	50	100	8	8

Notes: Certain gensets listed in the table are no longer being manufactured.

Panda vehicle gensets AGT

(PVMV-N, PVM-NE, PVM-H PVK-U, PVK-UK)

Generator-Modell / Generator model	Ø Kühlwasserleitung / Cooling water hose [mm]	Ø Abgasleitung / Exhaust hose [mm]	Ø Kraftstoffleitung / Fuel hose [mm]	
			Zulauf / Feed	Rücklauf / Return
Panda AGT 4000-12V	20	40	8	8
Panda AGT 4000-24V	20	40	8	8
Panda 5000-12V	25	40	8	8
Panda 6000-24V	25	40	8	8
Panda 8000-24V	25	40	8	8
Panda AGT 12000	25	40	8	8
Panda AGT 14000	25	40	8	8
Panda AGT 16000	25	40	8	8
Panda AGT 25000	25	40	8	8



Disclaimer:

The information contained here is to the best of our knowledge accurate at the date of publication. Please note that the data in this publication reflects the technical state at time of print. Dimensions apply for the sound insulation capsule only and do not include latches, fittings etc. Additional room will need to be calculated for installation to include hoses, cables and capsule mountings. Additional components or alternators may also affect capsule dimensions. Due to our policy of continual product development, we reserve the right to alter technical specifications without notice. All performance data relates to air and water temperatures of 20°C unless otherwise stated.



Fischer Panda GmbH
Otto-Hahn-Str. 40
D-33104 Paderborn
Germany

Tel. : +49 5254 9202-0
Fax : +49 5254 9202-550
Email : info@fischerpanda.de
Web : www.fischerpanda.de

